

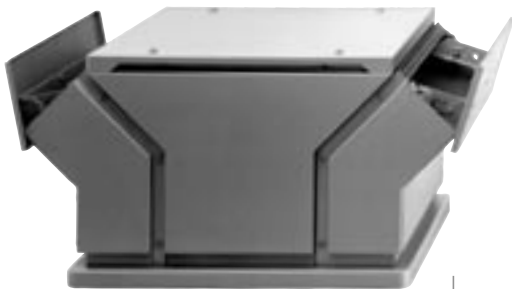
Klassikern | The classic *genovent*[®]



RDM 31/32
RDA 32

Typ **RDM**
med standardmotor
Flöde upp till 57 000 m³/h

Line **RDM**
with IEC standard motor
Flow rate up to 57,000 m³/h



RDA 31

Typ **RDA**
med **Gebhardt** ytterrotormotor
(asynkron- eller EC-teknik)
Flöde upp till 34 000 m³/h

Line **RDA**
with **Gebhardt** external rotor motor
(AC or EC technology)
Flow rate up to 34,000 m³/h



genovent[®] är i alla avseenden en premiumprodukt:

Den övertygar med sin uttrycksfulla design, sin korrosionsbeständiga aluminiumkåpa och ett flertal tekniska finesser. Och dessutom är priset för denna högprestandafläkt är förvånansvärt bra!

The *genovent*[®] in every respect is a premium product:

It's convincing by its powerful design, its corrosion resistant aluminium casing and multiple other technical refinements, and what is more, the price of this high performance fan is astonishing.

Kvalitet har sitt pris, men vem säger att det måste vara särskilt högt?

Det utmärkta förhållandet pris / kvaliteten för *genovent*[®]

genovent[®] sparar pengar på alla plan:

Spara pengar redan när du köper den

- genom en extremt högvärdig grundutrustning utan något pristillägg.

Spara pengar under drift

- genom låga värmeförluster.
- genom lång, underhållsfri drift.

Spara pengar vid montering och underhåll

- genom enkel montering utan specialverktyg.
- genom att enkelt fälla upp kåpan.

Quality has its Price – who asserted that it has to be high?

The excellent price – quality ratio of the *genovent*[®]

The **genovent[®]** is saving cash at all levels:

Save money when buying it

- because of extremely high value specification without extra cost

Save money when running it

- because of reducing heat losses.
- because of long lasting maintenance free operation.

Save money when installing and servicing it

- because of easy fitting without special tools.
- by simple screwing down of the casing.

Det extraordinära är standard hos oss

Den tekniska kvalitén hos *genovent*®

Forsknings- och utvecklingsavdelningen på **Gebhardt** är särskilt kända för sina smarta idéer. Ett gott exempel på detta är *genovent*®, som är full av extraordinära lösningar – och det utan pristillägg:

- *genovent*® är för alla användningar – även vid fläktbyte – den **enkla plug-and-play-lösningen** vid monteringen.
- Den intelligenta konstruktionen av *genovent*® gör underhåll och inspektion särskilt enkel och kostnadsbesparande genom att den enkelt går att fälla upp: skruva loss – färdigt!
- Backspjället på avluftssidan förhindrar att snö eller regn tränger in, förebygger onödiga värmeförluster i kanalsystemet och innebär att man slipper installera ett separat spjäll under fläkten.
- Den **höga kastlängden** hos den vertikalt utblåsande *genovent*®-fläkten skyddar taket från nedsmutsning och förhindrar ventilationstekniskt betingade kortslutningar.
- Den **integrerade ljuddämpningen** i typerna **RDA 32** och **RDM 32** reducerar ljudet på avluftssidan med i genomsnitt 7 dB(A).
- **Möjligheten till flexibel och exakt anpassning** av önskad arbetspunkt leder till sänkt energiförbrukning. Vi erbjuder som tillval lösningar med spänningsreglerbara resp. polomkopplingsbara motorer, inbyggda resp. externa frekvensomriktare eller t.o.m. med särskilt energibesparande EC-teknik.
- *genovent*® takfläktar kan även levereras i ATEX-utförande, kategori 3G.

The extraordinary is a standard with us

The technological quality of the *genovent*®

The research and development department at **GebhardtVentilatoren** is known for their sophisticated ideas. A good example is the *genovent*®, which is full of extraordinary solutions – without asking for extra cost.

- The *genovent*® can be fitted as **easy as plug&play** - even when exchanging an existing unit.
- The intelligent design of the *genovent*® makes it possible to open the fan in a most simple and cost saving manner: unscrew and ready!
- The back draught dampers protect the fan from intruding snow or rain, and prevents unnecessary heat losses of the duct system. This is built in, no extra backdraught damper need be provided.
- A considerable throw of the vertically discharging *genovent*® is preventing the roof from dirt deposits and air flow short circuits.
- The **integrated sound absorbing** lining for **RDA 32** and **RDM 32** is reducing the sound level by about 7 dB(A).
- **A flexible and precise targeting** of the required duty point reduces energy consumption. As an option we offer energy efficient solutions through voltage controlled or multi speed motors, through integrated or additional frequency inverters or even through energy saving EC-motors.
- *genovent*® roof fans are also available in ATEX execution acc. to category 3G.

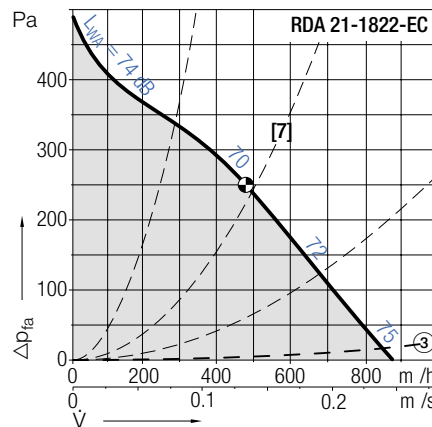
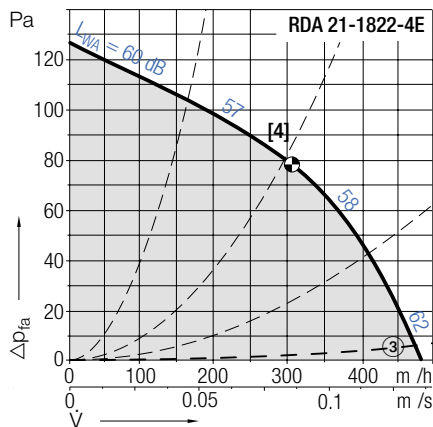
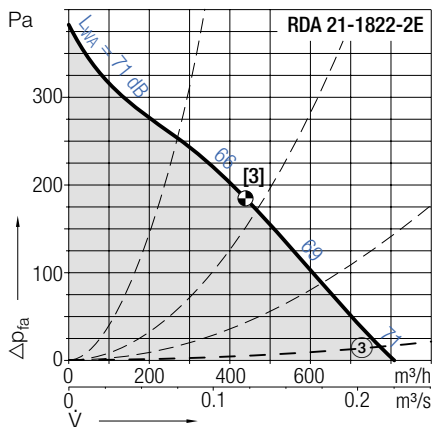
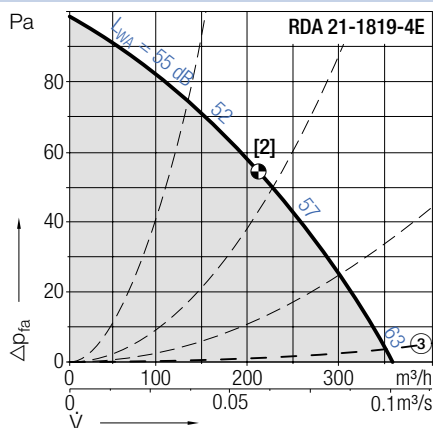
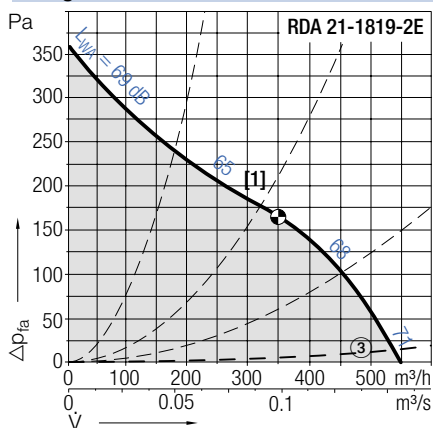


RDA 21-1819/-1822

RDA genovent		Tekniska data							Technical Data					
r- vor	Pol- tal	Spänning/ anslutning	Frek- vens	Varvtal	Max. effekt- förbrukning	Märk- ström	Startström/ Märkström	V_{max}	L_{WA8} vid V_{max}	onden- sator	Skyddsklass/ Isolationskl.	Vikt RDA 21	Media- temp.	
Curves	Poles	Voltage/ Connection	Fre- quency	Speed	Max. power consumption	Nominal current	Starting/Full load current	V_{max}	L_{WA8} at V_{max}	Capa- citor	Protection/ Temp. class	Weight RDA 21	Media temp.	
RDA 21-	V	Hz	v/min	kW	A			m ³ /h	dB	μF		kg	°C	
1819-2E • [1]	2	230, 1~	50	2360	0.063	0.27	1.7	550	71	2.0	IP44/B	5.0	-20...+60	
1819-4E • [2]	4	230, 1~	50	1405	0.04	0.17	1.3	355	63	1.4	IP44/B	5.0	-20...+50	
1822-2E • [3]	2	230, 1~	50	2120	0.10	0.44	1.3	805	71	3.0	IP44/B	5.5	-20...+55	
1822-4E • [4]	4	230, 1~	50	1405	0.054	0.24	1.5	480	62	2.0	IP44/B	5.0	-20...+55	
1822-EC • [7]	-	230, 1~	50/60	2450	0.084	0.76	-	880	75	-	IP44/B	5.0	-20...+60	

• (även) steglöst varvtalsreglerbar med spänning | • (also) stepless speed controllable by tension variation

RDA genovent Kurvor Curves $\rho_1=1.15 \text{ kg/m}^3$



RDA genovent		Tillbehör					Accessories				
	Arbets- brytare	Motorskydds- brytare	Transformator 7-stegs	Transformator 5-stegs	Vridtyristor	Varvtalsregl. elektronisk	Varvtalsregl. mikroprocessor	Varvtalsregl. elektronisk			
	Isolator	Motor protection unit	Transformer 7 taps	Transformer 5-steps	Speed regulator electronic	Speed regulator electronic	Speed regulator micro processor	Speed controller electronic			
RDA 21-	ESH	ESM	ETO	ETH	EPH	EPA	EPA	EPA			
1819-2E •	21-0030-22	⑤	10-0018-5E	31-0020-5E	03-0010-5E	-	93-0023-5E	-			
1819-4E •	21-0030-22	⑤	10-0018-5E	31-0020-5E	03-0010-5E	-	93-0023-5E	-			
1822-2E •	21-0030-22	⑤	10-0018-5E	31-0020-5E	03-0010-5E	03-0060-5E	93-0023-5E	83-0060-5E			
1822-4E •	21-0030-22	⑤	10-0018-5E	31-0020-5E	03-0010-5E	-	93-0023-5E	-			

RDA 21-1819/-1822

RDA genovent



RDA 21- genovent

Gebhardt ytterrotormotor med monterat radialfläkthjul.

Tillbehör / Index

- ② Lutning upp till 45° i steg om 5° är möjlig
- ③ Tryckfall i spjäll
- ⑤ På dessa typer av motorer ligger termokontakterna **internt** i serie med lindningen. Skulle motorn uppnå gränstemperaturen, kopplar kontakterna från motorn omedelbart. Någon motorskydds brytare behövs inte.

RDA 21- genovent

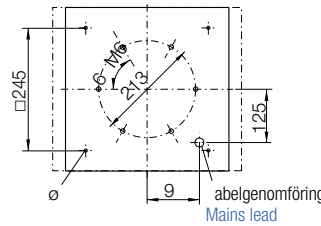
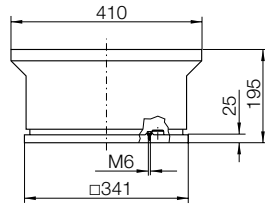
Gebhardt external rotor motor with impeller fitted directly.

Accessories / Index

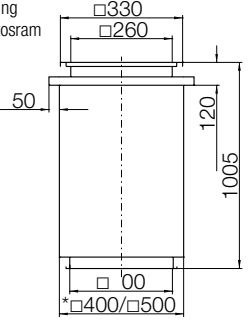
- ② inclination in 5° steps up to 45° possible
- ③ Pressure loss at back draught damper
- ⑤ These fan types have motors with thermal contacts connected **internally** in series with the winding. They shut down the motor directly a preset temperature limit is reached. Motor protection units are not needed.

Mått i mm, vi förbehåller oss rätten till ändringar.

Dimensions in mm, Subject to change.



G-200 [St]
Takgenomföring
inkl. fällbar stosram
*EI30/EI60
Roof duct
with Foldable
frame
*EI30/EI60

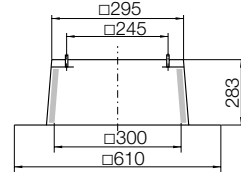


Tillbehör

ZBS 01-0031 [Al] 3 kg

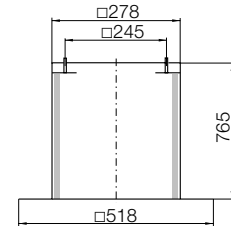
ZBS 20-0031 [St] 6 kg

Stos för platta tak
Flat roof upstand



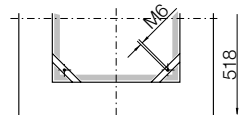
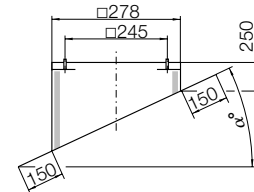
ZBS 23-0031 [St] 10 kg

Stos för platta tak, hög
Flat roof upstand tall



ZBS 09-0031-② [Al] 4 kg

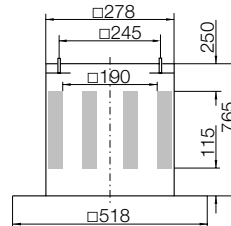
Stos för snedtak
Inclined roof upstand



ZDS 01-0028 [Al] 11 kg

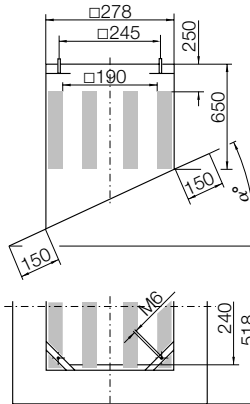
ZDS 20-0028 [St] 15 kg

Stosljuddämpare
Upstand silencer



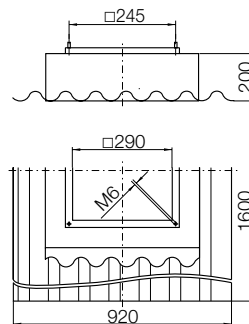
ZDS 09-0028-② [Al] 11 kg

Stosljuddämpare för snedtak
Inclined roof upstand silencer



ZBS 11-0031 [GF] 11 kg

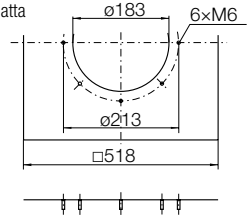
Stos för korrugerat tak
Soaker sheet WDS



Accessories

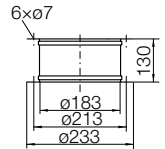
ZBU 01-0028-18 [St] 2 kg

Anslutningsplatta
Connection plate



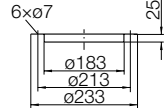
ZKE 11-0180 0.7 kg

Dukstos, inlopp
Inlet connection (flexible)



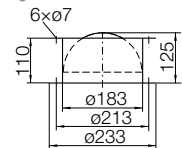
ZKF 11-0180 0.3 kg

Motfläns, inlopp
Mating flange



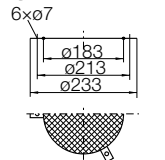
ZLK 01-0180 4 kg

Självstängande
backspjäll
Automatic
shutter



ZSG 04-0180 0.1 kg

Inloppsgaller
Mesh inlet guard

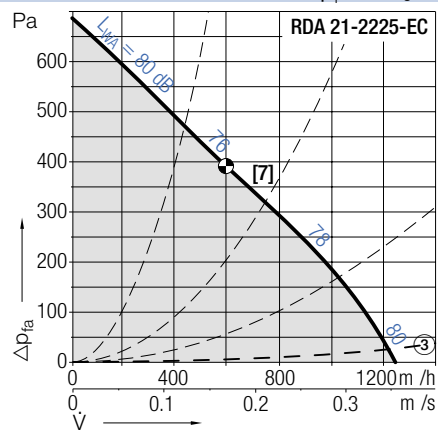
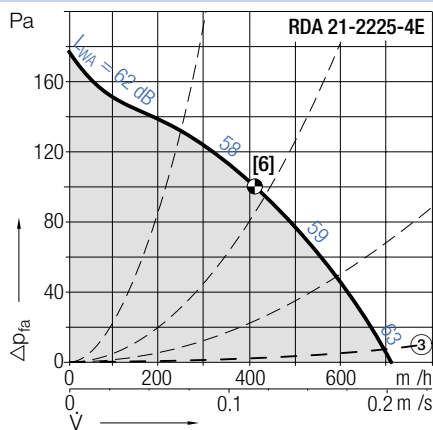
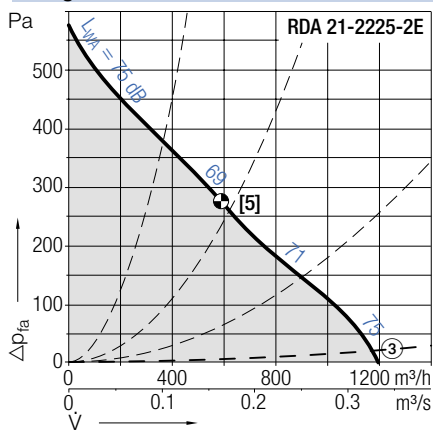


RDA 21-2225

RDA genovent		Tekniska data							Technical Data					
ur- vor	Pol- tal	Spänning/ anslutning	Frek- vens	Varvtal	Max. effekt- förbrukning	Märk- ström	Startström/ Märkström	V_{max}	L_{WA8} vid V_{max}	onden- sator	Skyddsklass/ Isolationskl.	Vikt RDA 21	Media- 21 temp.	
Curves	Poles	Voltage/ Connection	Fre- quency	Speed	Max. power consumption	Nominal current	Starting/Full load current	V_{max}	L_{WA8} at V_{max}	Capa- citor	Protection/ Temp. class	Weight RDA 21	Media temp.	
RDA 21-		V	Hz	v/min	kW	A		m ³ /h	dB	μF		kg	°C	
2225-2E•	[5]	2	230, 1~	50	2230	0.173	0.76	1.3	1200	75	5.0	IP44/B	6.5	-20...+60
2225-4E•	[6]	4	230, 1~	50	1390	0.055	0.24	1.9	705	63	2.0	IP44/B	6.0	-20...+60
2225-EC•	[7]	-	230, 1~	50/60	2620	0.17	1.42	-	1240	80	-	IP44/B	8.0	-20...+60

• (även) steglöst varvtalsreglerbar med spänning | • (also) stepless speed controllable by tension variation

RDA genovent Kurvor RDA 21-2225-2E RDA 21-2225-4E RDA 21-2225-EC $\rho_1=1.15 \text{ kg/m}^3$



RDA genovent		Tillbehör					Accessories			
	Arbets- brytare	Motorskydds- brytare	Transformator 7-stegs	Transformator 5-stegs	Vridtyristor	Varvtalsregl. elektronisk	Varvtalsregl. mikroprocessor	Varvtalsregl. elektronisk	Potentio- meter	
	Isolator	Motor protection unit	Transformer 7 taps	Transformer 5-steps	Speed regulator electronic	Speed regulator electronic	Speed regulator micro processor	Speed controller electronic	Speed regulator module	
RDA 21-	ESH	ESM	ETO	ETH	EPH	EPA	EPA	EPA	EGH	
2225-2E•	21-0030-22	Ⓢ	10-0018-5E	31-0020-5E	03-0010-5E	03-0060-5E	93-0023-5E	83-0060-5E	-	
2225-4E•	21-0030-22	Ⓢ	10-0018-5E	31-0020-5E	03-0010-5E	-	93-0023-5E	-	-	
2225-EC•	21-0030-22	-	-	-	-	-	-	-	EGH 01	

RDA 21-2225

RDA genovent



RDA 21- genovent

Gebhardt ytterrotormotor med monterat radialfläkt hjul.

Tillbehör / Index

- ② Lutning upp till 45° i steg om 5° är möjlig
- ③ Tryckfall i spjäll
- ⑤ På dessa typer av motorer ligger termokontakterna **internt** i serie med lindningen. Skulle motorn uppnå gränstemperaturen, kopplar kontakterna från motorn omedelbart. Någon motorskydds brytare behövs inte.

RDA 21- genovent

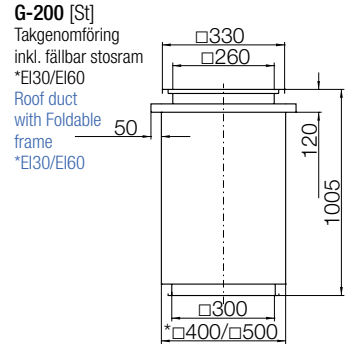
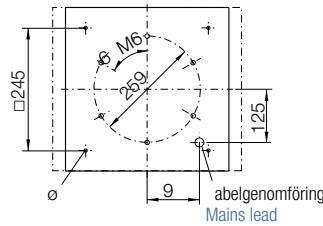
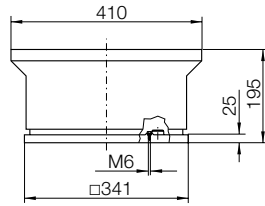
Gebhardt external rotor motor with impeller fitted directly.

Accessories / Index

- ② inclination in 5° steps up to 45° possible
- ③ Pressure loss at back draught damper
- ⑤ These fan types have motors with thermal contacts connected **internally** in series with the winding. They shut down the motor directly a preset temperature limit is reached. Motor protection units are not needed.

Mått i mm, vi förbehåller oss rätten till ändringar.

Dimensions in mm, Subject to change.

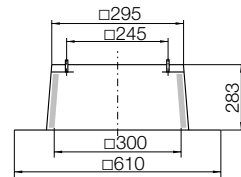


Tillbehör

ZBS 01-0031 [Al] 3 kg

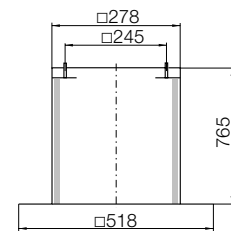
ZBS 20-0031 [St] 6 kg

Stos för platta tak
Flat roof upstand



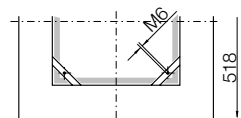
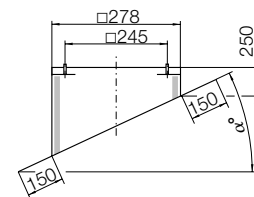
ZBS 23-0031 [St] 10 kg

Stos för platta tak, hög
Flat roof upstand tall



ZBS 09-0031-② [Al] 4 kg

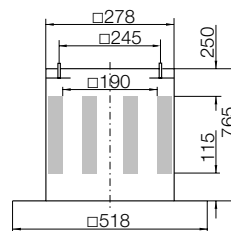
Stos för snedtak
Inclined roof upstand



ZDS 01-0028 [Al] 11 kg

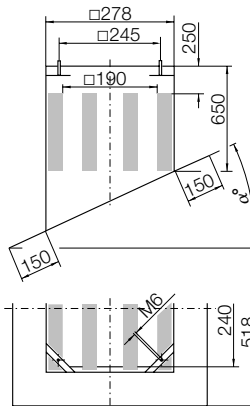
ZDS 20-0028 [St] 15 kg

Stosljuddämpare
Upstand silencer



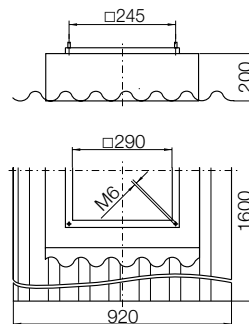
ZDS 09-0028-② [Al] 11 kg

Stosljuddämpare för snedtak
Inclined roof upstand silencer



ZBS 11-0031 [GF] 11 kg

Stos för korrugerat tak
Soaker sheet WDS



G-200 [St]

Takgenomföring
inkl. fällbar stosram
*EI30/EI60

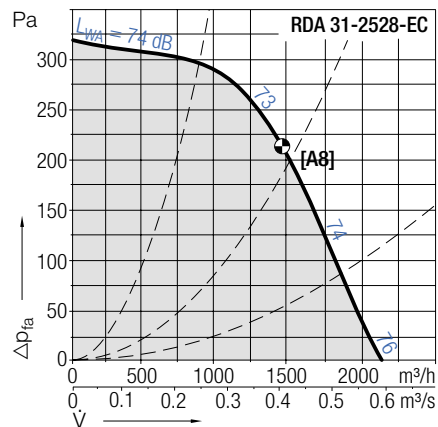
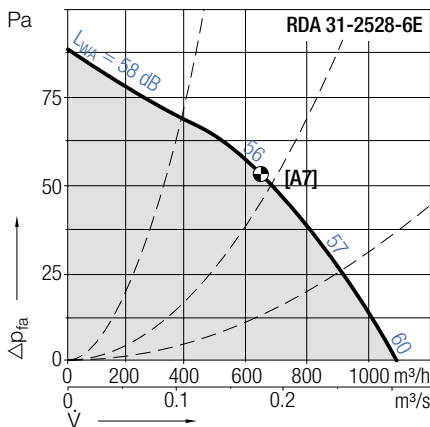
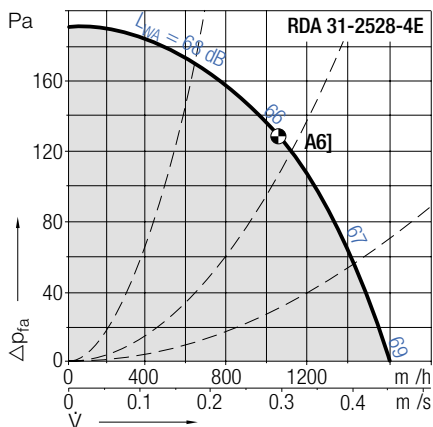
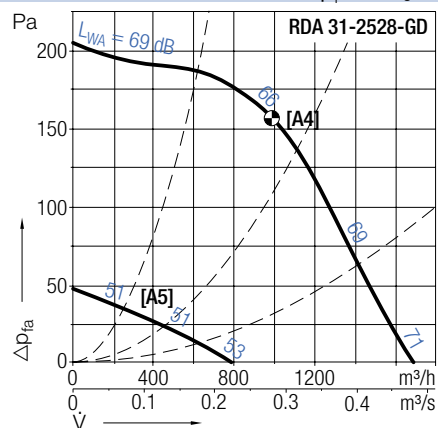
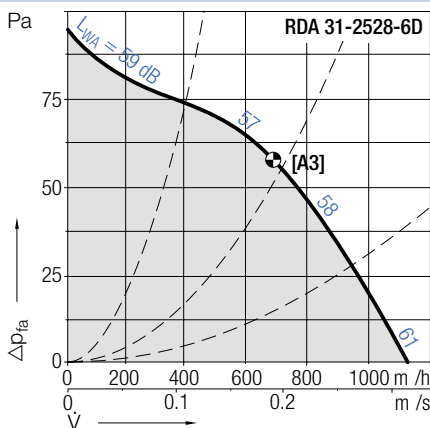
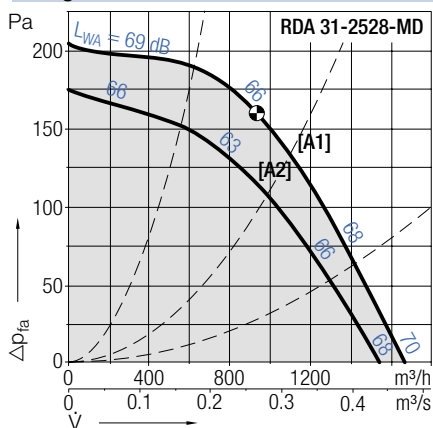
Roof duct
with Foldable
frame
*EI30/EI60

RDA 31-/32-2528

RDA genovent		Tekniska data (V_{max} / L_{WA8} giltig för RDA 31)							Technical Data (V_{max} / L_{WA8} valid to RDA 31)					
ur- vor	Pol- tal	Spänning/ anslutning	Frek- vens	Varvtal	Max. effekt- förbrukning	Märk- ström	Startström/ Märkström	V_{max}	L_{WA8} vid V_{max}	onden- sator	Skyddskl./ Isolationskl.	Vikt 31/32	Media- temp.	
Curves	Poles	Voltage/ Connection	Fre- quency	Speed	Max. power consumption	Nominal current	Starting/Full load current	V_{max}	L_{WA8} at V_{max}	Capa- citor	Protection/ Temp. class	Weight 31/32	Media temp.	
RDA 31-/32-	V	Hz	v/min	kW	A			m^3/h	dB	μF		kg	$^{\circ}C$	
2528-MD•	[A1/A2]	4/4	400, 3~ Δ/Y	50	1420/1260	0.13/0.09	0.40/0.16	2.8	1670/1550	70/68	-	IP44/F	17/24	-20...+60
2528-6D•	[A3]	6	400, 3~ Y	50	945	0.08	0.29	1.6	1125	61	-	IP44/F	17/24	-20...+60
2528-GD	[A4/A5]	4/8	400, 3~ YY/Y	50	1430/ 720	0.16/0.05	0.37/0.15	3.0	1700/ 800	71/53	-	IP54/F	18/24	-20...+60
2528-4E•	[A6]	4	230, 1~	50	1360	0.15	0.75	1.7	1600	69	3	IP44/F	17/24	-20...+55
2528-6E•	[A7]	6	230, 1~	50	925	0.08	0.43	1.4	1100	60	2	IP44/F	17/24	-20...+60
2528-EC•	[A8]	-	230, 1~	50/60	1820	0.205	1.10	-	2130	76	-	IP44/B	19/26	-20...+40

• (även) steglöst varvtalsreglerbar med spänning | • (also) stepless speed controllabile by tension variation

RDA genovent Kurvor Curves $\rho_1=1.15 \text{ kg/m}^3$



RDA genovent	Tillbehör					Accessories			
Arbets- brytare	Motorskydds- brytare	Transformator 7-stegs	Transformator 5-stegs	Vridtyristor	Varvtalsregl. elektronisk	Varvtalsregl. mikroprocessor	Varvtalsregl. elektronisk	Potentio- meter	
Isolator	Motor protection unit	Transformer 7 taps	Transformer 5-steps	Speed regulator electronic	Speed regulator electronic	Speed regulator micro processor	Speed controller electronic	Speed regulator module	
RDA 31-/32-ESH	ESM	ETO	ETH	EPH	EPA	EPA	EPA	EGH	
2528-MD•	21-0030-65	04-0040-8D	10-0010-8D	35-0010-8D	-	-	83-0050-8D	-	
2528-6D•	21-0030-35	01-0040-8D	10-0010-8D	35-0010-8D	-	-	-	-	
2528-GD	21-0030-65	03-0040-8D	-	-	-	-	-	-	
2528-4E•	21-0030-22	-	10-0018-5E	31-0020-5E	03-0010-5E	03-0060-5E	93-0023-5E	83-0060-5E	-
2528-6E•	21-0030-22	-	10-0018-5E	31-0020-5E	03-0010-5E	03-0060-5E	93-0023-5E	83-0060-5E	-
2528-EC•	21-0030-22	-	-	-	-	-	-	EGH 01	

RDA 31-/32-2528

RDA *genovent*



RDA 31-



RDA 32-

Ljuddämpat utförande
Noise attenuated version

RDA 31- *genovent*

Gebhardt ytterrotor motor med monterat radialfläkt hjul. Alla EC-typerna med integrerad kommuteringsenhet.

RDA 32- *genovent*

Extra ljudabsorberande beklädnad för reducering av ljud-effektnivån med ca 7 dB(A) på avluftssidan.

Flödet reduceras vid samma tryckökning med 5-10 % jämfört med typ RDA 31.

Tillbehör / Index

- ② Lutning upp till 45° i steg om 5° är möjlig
- ⑥ En skyddsfunktion vid högt varvtal garanteras endast om en Dahlander-brygga finns

RDA 31- *genovent*

Gebhardt external rotor motor with impeller fitted directly. All EC-types with integrated Commutation unit.

RDA 32- *genovent*

Additionally equipped with sound absorbing lining for A-sound power level reduction of about 7 dB at discharge. The flow rate to RDA 31 will be reduced of 5-10 % at same pressure rise.

Accessories / Index

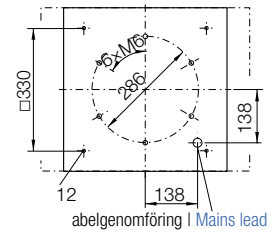
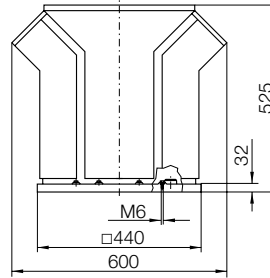
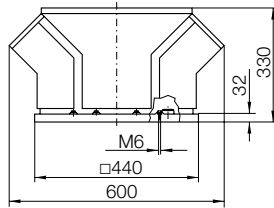
- ② inclination in 5° steps up to 45° possible
- ⑥ A protection for high speed is only active if Dahlander bridge is on place

Mått i mm, vi förbehåller oss rätten till ändringar.

Dimensions in mm, Subject to change.

RDA 31-2528-..

RDA 32-2528-..



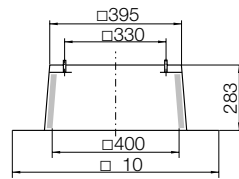
Tillbehör

ZBS 01-0040 [Al] 4 kg

ZBS 20-0040 [St] 8 kg

Stos för platta tak

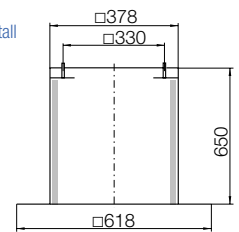
Flat roof upstand



ZBS 23-0040 [St] 10 kg

Stos för platta tak, hög

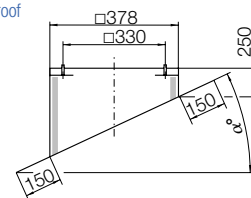
Flat roof upstand tall



ZBS 09-0040-② [Al] 5 kg

Stos för snedtak

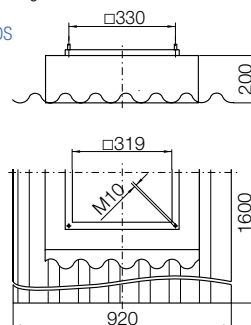
Inclined roof upstand



ZBS 11-0040 [GF] 11 kg

Stos för korrugerat tak

Soaker sheet WDS



Accessories

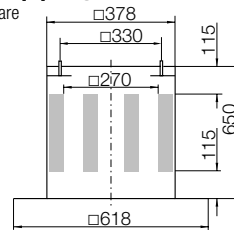
ZDS 01-0040 [Al] 13 kg

ZDS 20-0040 [St] 18 kg

Stosljuddämpare

Upstand silencer

①

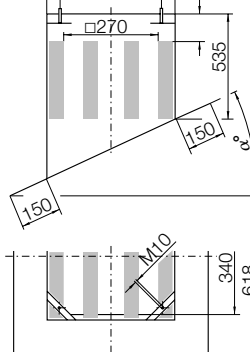


ZDS 09-0040-② [Al] 13 kg

Stosljuddämpare för snedtak

Inclined roof upstand silencer

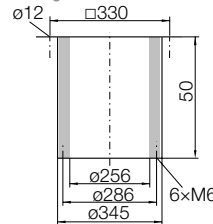
①



ZDR 30-0250 12 kg

Ljuddämpare inloppssida

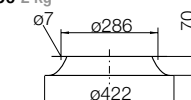
Inlet silencer



ZKD 01-0250 2 kg

Inloppskona med fläns

Flanged inlet cone

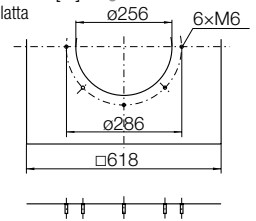


ZBU 01-0040-25 [St] 4 kg

Anslutningsplatta

Connection plate

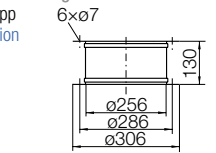
abelgenomföring | Mains lead



ZKE 11-0250 1.4 kg

Dukstos, inlopp

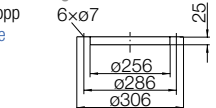
Inlet connection (flexible)



ZKF 11-0250 0.7 kg

Motfläns, inlopp

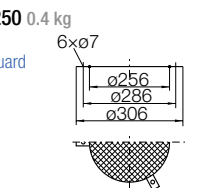
Mating flange



ZSG 04-0250 0.4 kg

Inloppsgaller

Mesh inlet guard



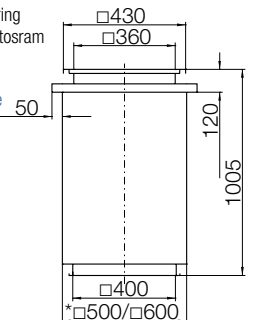
G-250 [St]

Takgenomföring inkl. fällbar stosram

*EI30/EI60

Roof duct with Foldable frame

*EI30/EI60

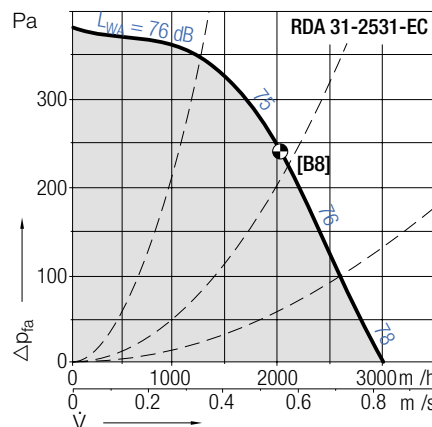
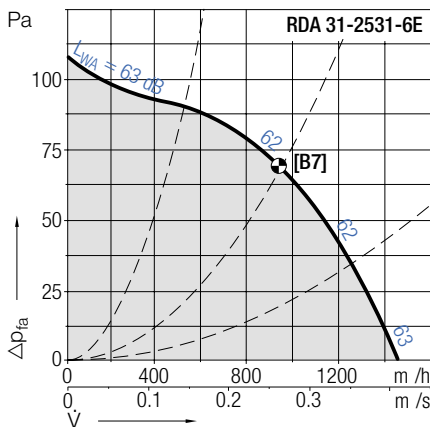
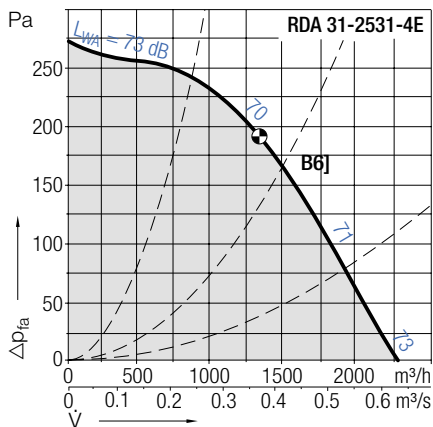
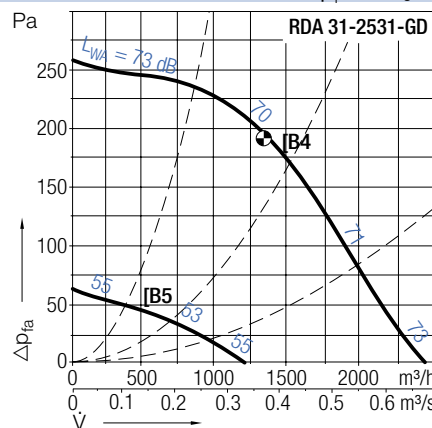
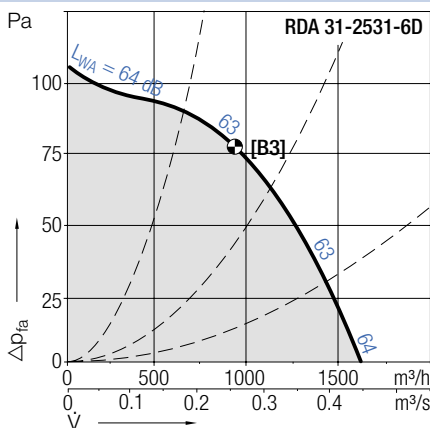
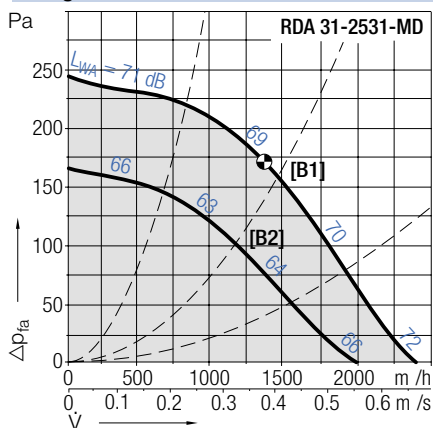


RDA 31-/32-2531

RDA genovent		Tekniska data (V_{max} / L_{WAB} giltig för RDA 31)							Technical Data (V_{max} / L_{WAB} valid to RDA 31)					
ur- vor	Pol- tal	Spänning/ anslutning	Frek- vens	Varvtal	Max. effekt- förbrukning	Märk- ström	Startström/ Märkström	V_{max}	L_{WAB} vid V_{max}	onden- sator	Skyddskl./ Isolationskl.	Vikt 31/32	Media- temp.	
Curves	Poles	Voltage/ Connection	Fre- quency	Speed	Max. power consumption	Nominal current	Starting/Full load current	V_{max}	L_{WAB} at V_{max}	Capa- citor	Protection/ Temp. class	Weight 31/32	Media temp.	
RDA 31-/32-	V	Hz	v/min	kW	A			m^3/h	dB	μF		kg	$^{\circ}C$	
2531-MD•	[B1 B2]	4/4	400, 3~ Δ/Y	50	1340/1070	0.19/0.13	0.43/0.22	2.6	2400/1970	72/66	-	IP44/F	19/29	-20...+60
2531-6D•	[B3]	6	400, 3~ Y	50	940	0.12	0.42	1.7	1630	64	-	IP44/F	18/29	-20...+60
2531-GD	[B4 B5]	4/8	400, 3~ YY/Y	50	1400/ 710	0.23/0.06	0.50/0.18	3.2	2470/1200	73/55	-	IP54/F	19/29	-20...+60
2531-4E•	[B6]	4	230, 1~	50	1410	0.23	1.25	2.2	2300	73	6	IP44/F	19/29	-20...+60
2531-6E•	[B7]	6	230, 1~	50	920	0.12	0.68	1.4	1470	63	3	IP44/F	18/29	-20...+60
2531-EC•	[B8]	-	230, 1~	50/60	1735	0.31	1.60	-	3000	78	-	IP44/B	21/-	-20...+40

• (även) steglöst varvtalsreglerbar med spänning | • (also) stepless speed controllabile by tension variation

RDA genovent Kurvor Curves $\rho_1=1.15 \text{ kg/m}^3$



RDA genovent Tillbehör Accessories

	Arbets- brytare	Motorskydds- brytare	Transformator 7-steps	Transformator 5-steps	Vridtyristor	Varvtalsregl. elektronisk	Varvtalsregl. mikroprocessor	Varvtalsregl. elektronisk	Potentio- meter
	Isolator	Motor protection unit	Transformer 7 taps	Transformer 5-steps	Speed regulator electronic	Speed regulator electronic	Speed regulator micro processor	Speed controller electronic	Speed regulator module
RDA 31-/32-ESH	ESM	ETO	ETH	EPH	EPA	EPA	EPA	EPA	EGH
2531-MD•	21-0030-65	04-0040-8D	10-0010-8D	35-0010-8D	-	-	-	83-0050-8D	-
2531-6D•	21-0030-35	01-0040-8D	10-0010-8D	35-0010-8D	-	-	-	83-0050-8D	-
2531-GD	21-0030-65	03-0040-8D	Ⓞ	-	-	-	-	-	-
2531-4E•	21-0030-22	-	10-0018-5E	31-0020-5E	03-0020-5E	03-0060-5E	93-0023-5E	83-0060-5E	-
2531-6E•	21-0030-22	-	10-0018-5E	31-0020-5E	03-0010-5E	03-0060-5E	93-0023-5E	83-0060-5E	-
2531-EC•	21-0030-22	-	-	-	-	-	-	-	EGH 01

RDA 31-/32-2531

RDA *genovent*



RDA 31-



RDA 32-

Ljuddämpat utförande
Noise attenuated version

RDA 31- *genovent*

Gebhardt ytterrotormotor med monterat radialfläkt hjul. Alla EC-typerna med integrerad kommuteringsenhet.

RDA 32- *genovent*

Extra ljudabsorberande beklädnad för reducering av ljud-effektnivån med ca 7 dB(A) på avluftssidan.

Flödet reduceras vid samma tryckökning med 5-10 % jämfört med typ RDA 31.

Tillbehör / Index

- ② Lutning upp till 45° i steg om 5° är möjlig
- ⑥ En skyddsfunktion vid högt varvtal garanteras endast om en Dahlander-brygga finns

RDA 31- *genovent*

Gebhardt external rotor motor with impeller fitted directly. All EC-types with integrated Commutation unit.

RDA 32- *genovent*

Additionally equipped with sound absorbing lining for A-sound power level reduction of about 7 dB at discharge. The flow rate to RDA 31 will be reduced of 5-10 % at same pressure rise.

Accessories / Index

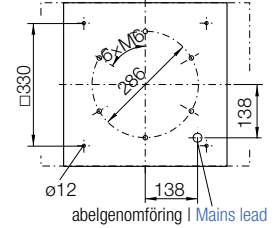
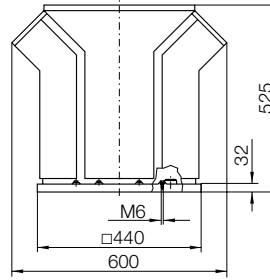
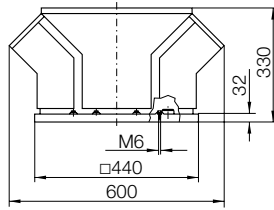
- ② inclination in 5° steps up to 45° possible
- ⑥ A protection for high speed is only active if Dahlander bridge is on place

Mått i mm, vi förbehåller oss rätten till ändringar.

Dimensions in mm, Subject to change.

RDA 31-2531-..

RDA 32-2531-..



Tillbehör

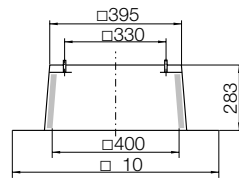
ZBS 01-0040 [Al] 4 kg

ZBS 20-0040 [St] 8 kg

Stos för platta tak

Flat roof

upstand

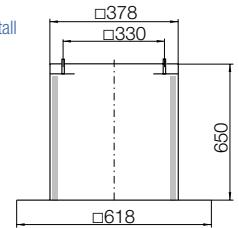


ZBS 23-0040 [St] 10 kg

Stos för platta tak, hög

Flat roof

upstand tall

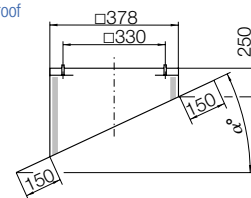


ZBS 09-0040-② [Al] 5 kg

Stos för snedtak

Inclined roof

upstand

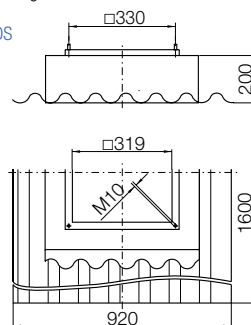


ZBS 11-0040 [GF] 11 kg

Stos för korrugerat tak

Soaker

sheet WDS



Accessories

ZDS 01-0040 [Al] 13 kg

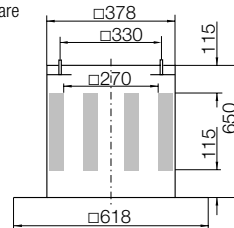
ZDS 20-0040 [St] 18 kg

Stosljuddämpare

Upstand

silencer

①



ZDS 09-0040-② [Al] 13 kg

Stosljuddämpare

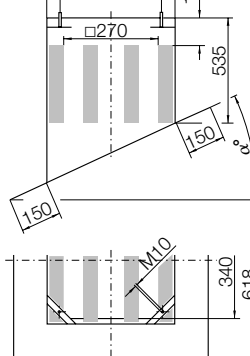
för snedtak

Inclined roof

upstand

silencer

①

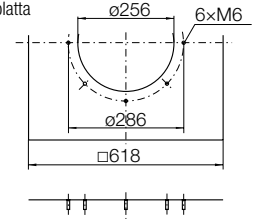


ZBU 01-0040-25 [St] 4 kg

Anslutningsplatta

Connection

plate

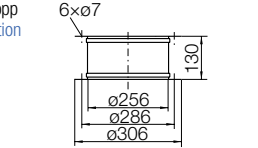


ZKE 11-0250 1.4 kg

Dukstos, inlopp

Inlet connection

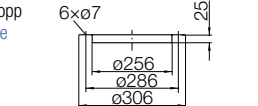
(flexible)



ZKF 11-0250 0.7 kg

Motfläns, inlopp

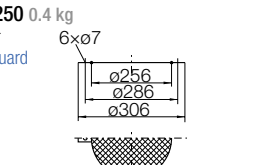
Mating flange



ZSG 04-0250 0.4 kg

Inloppsgaller

Mesh inlet guard



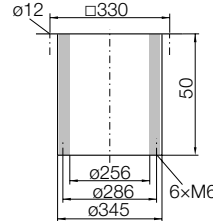
ZDR 30-0250 12 kg

Ljuddämpare

inloppssida

Inlet

silencer



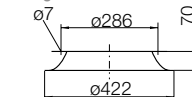
ZKD 01-0250 2 kg

Inloppskona

med fläns

Flanged

inlet cone



G-250 [St]

Takgenomföring

inkl. fällbar stosram

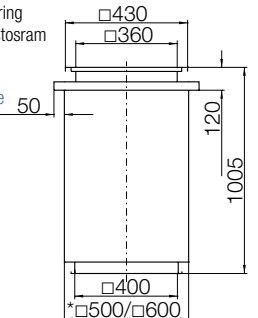
*EI30/EI60

Roof duct

with Foldable

frame

*EI30/EI60

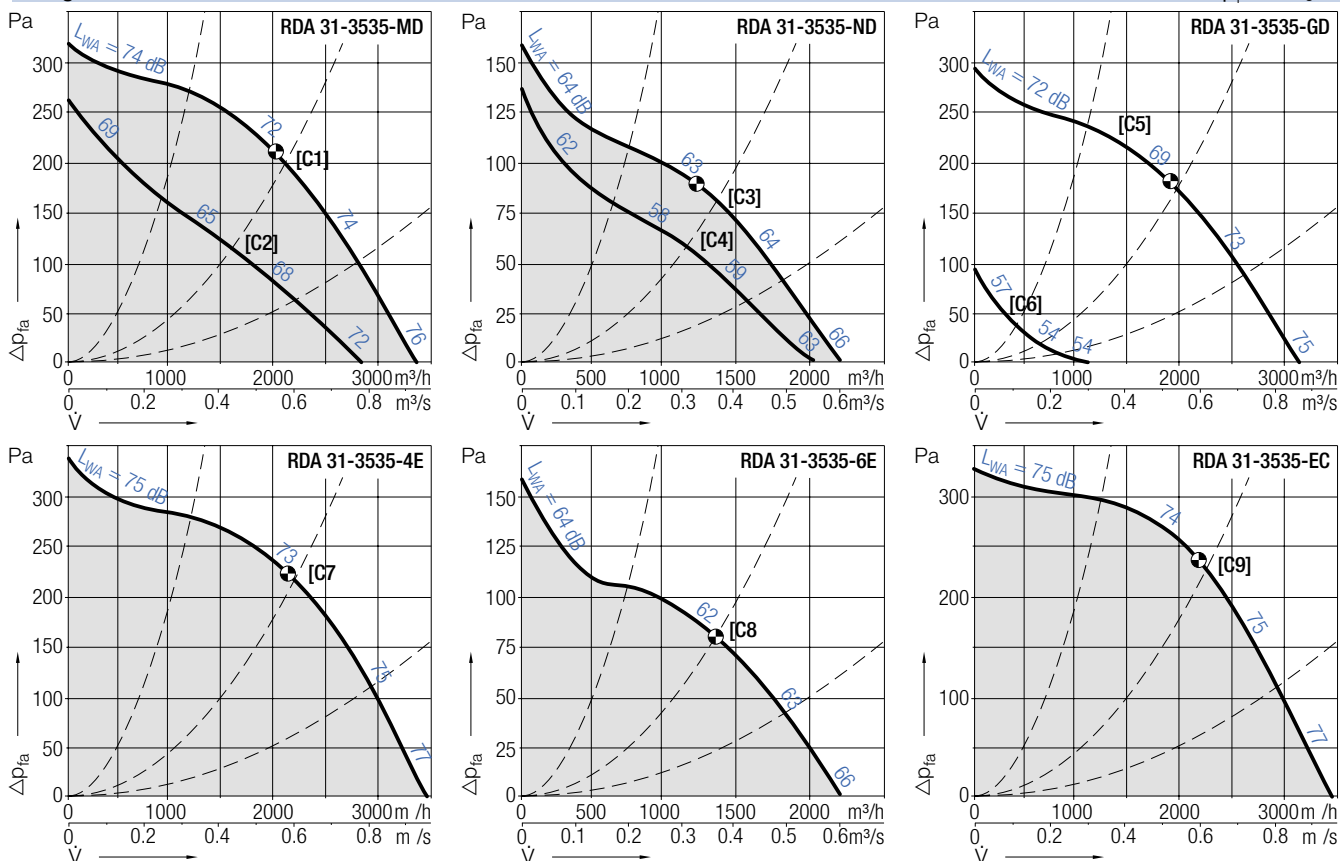


RDA 31-/32-3535

RDA genovent		Tekniska data (V_{max} / L_{WAB} giltig för RDA 31)							Technical Data (V_{max} / L_{WAB} valid to RDA 31)				
ur- vor	Pol- tal	Spänning/ anslutning	Frek- vens	Varvtal	Max. effekt- förbrukning	Märk- ström	Startström/ Märkström	V_{max}	L_{WAB} vid V_{max}	onden- sator	Skyddskl./ Isolationskl.	Vikt 31/32	Media- temp.
Curves	Poles	Voltage/ Connection	Fre- quency	Speed	Max. power consumption	Nominal current	Starting/Full load current	V_{max}	L_{WAB} at V_{max}	Capa- citor	Protection/ Temp. class	Weight 31/32	Media temp.
RDA 31-/32-	V	Hz	v/min	kW	A			m^3/h	dB	μF		kg	$^{\circ}C$
3535-MD• [C1C2]	4/4	400, 3~ Δ/Y	50	1340/1080	0.35/0.22	0.75/0.39	2.7	3350/2840	76/72	-	IP44/F	26/44	-20...+60
3535-ND• [C3C4]	6/6	400, 3~ Δ/Y	50	940/ 820	0.17/0.09	0.50/0.18	2.2	2200/2000	66/63	-	IP44/F	26/43	-20...+60
3535-GD [C5C6]	4/8	400, 3~ YY/Y	50	1280/ 670	0.33/0.06	0.56/0.15	2.3	3150/1100	75/54	-	IP54/F	26/48	-20...+60
3535-4E• [C7]	4	230, 1~	50	1370	0.36	1.90	1.8	3350	77	8	IP44/F	26/44	-20...+60
3535-6E• [C8]	6	230, 1~	50	930	0.15	0.95	1.6	2200	66	4	IP44/F	25/43	-20...+60
3535-EC• [C9]	-	230, 1~	50/60	1460	0.34	1.80	-	3460	77	-	IP44/B	28/-	-20...+40

• (även) steglöst varvtalsreglerbar med spänning | • (also) stepless speed controllable by tension variation

RDA genovent Kurvor Curves $\rho_1=1.15 \text{ kg/m}^3$



RDA genovent	Tillbehör					Accessories			
Arbets- brytare	Motorskydds- brytare	Transformator 7-stegs	Transformator 5-stegs	Vridtyristor	Varvtalsregl. elektronisk	Varvtalsregl. mikroprocessor	Varvtalsregl. elektronisk	Potentio- meter	
Isolator	Motor protection unit	Transformer 7 taps	Transformer 5-steps	Speed regulator electronic	Speed regulator electronic	Speed regulator micro processor	Speed controller electronic	Speed regulator module	
RDA 31-/32-ESH	ESM	ETO	ETH	EPH	EPA	EPA	EPA	EGH	
3535-MD•	21-0030-65	04-0040-8D	10-0010-8D	35-0010-8D	-	-	83-0050-8D	-	
3535-ND•	21-0030-65	04-0040-8D	10-0010-8D	35-0010-8D	-	-	83-0050-8D	-	
3535-GD	21-0030-65	03-0040-8D ⑥	-	-	-	-	-	-	
3535-4E•	21-0030-22	-	10-0040-5E	31-0020-5E	03-0020-5E	03-0060-5E	93-0023-5E	83-0060-5E	-
3535-6E•	21-0030-22	-	10-0018-5E	31-0020-5E	03-0010-5E	03-0060-5E	93-0023-5E	83-0060-5E	-
3535-EC•	21-0030-22	-	-	-	-	-	-	-	EGH 01

RDA 31-/32-3535

RDA *genovent*



RDA 31-



RDA 32-

Ljuddämpat utförande
Noise attenuated version

RDA 31- *genovent*

Gebhardt ytterrotormotor med monterat radialfläkt hjul. Alla EC-typerna med integrerad kommuteringsenhet.

RDA 32- *genovent*

Extra ljudabsorberande beklädnad för reducering av ljud-effektnivån med ca 7 dB(A) på avluftssidan.

Flödet reduceras vid samma tryckökning med 5-10 % jämfört med typ RDA 31.

Tillbehör / Index

- ② Lutning upp till 45° i steg om 5° är möjlig
- ⑥ En skyddsfunktion vid högt varvtal garanteras endast om en Dahlander-brygga finns

RDA 31- *genovent*

Gebhardt external rotor motor with impeller fitted directly. All EC-types with integrated Commutation unit.

RDA 32- *genovent*

Additionally equipped with sound absorbing lining for A-sound power level reduction of about 7 dB at discharge. The flow rate to RDA 31 will be reduced of 5-10 % at same pressure rise.

Accessories / Index

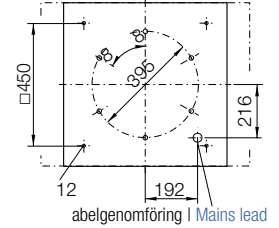
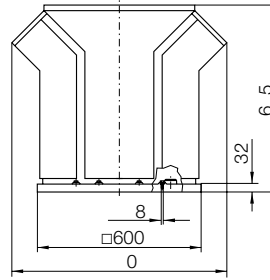
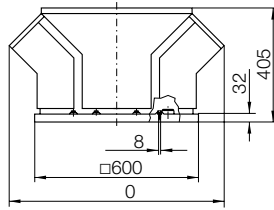
- ② inclination in 5° steps up to 45° possible
- ⑥ A protection for high speed is only active if Dahlander bridge is on place

Mått i mm, vi förbehåller oss rätten till ändringar.

Dimensions in mm, Subject to change.

RDA 31-3535-..

RDA 32-3535-..



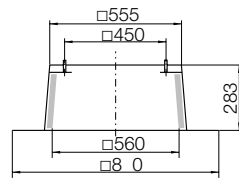
Tillbehör

ZBS 01-0056 [Al] 5 kg

ZBS 20-0056 [St] 10 kg

Stos för platta tak

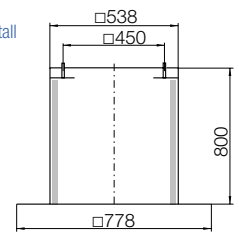
Flat roof upstand



ZBS 23-0056 [St] 14 kg

Stos för platta tak, hög

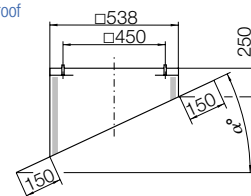
Flat roof upstand tall



ZBS 09-0056-② [Al] 6 kg

Stos för snedtak

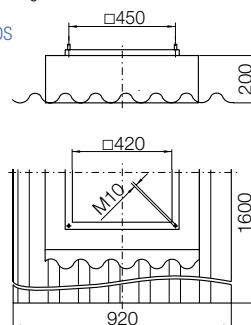
Inclined roof upstand



ZBS 11-0056 [GF] 12 kg

Stos för korrugerat tak

Soaker sheet WDS



Accessories

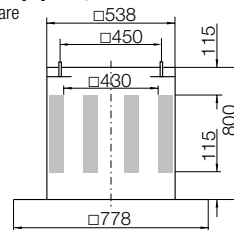
ZDS 01-0056 [Al] 29 kg

ZDS 20-0056 [St] 40 kg

Stosljuddämpare

Upstand silencer

①

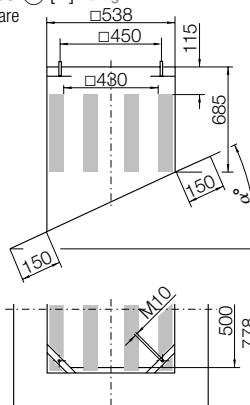


ZDS 09-0056-② [Al] 29 kg

Stosljuddämpare för snedtak

Inclined roof upstand silencer

①

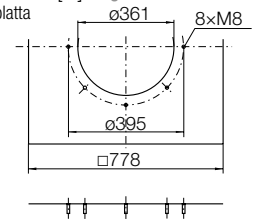


ZBU 01-0056-35 [St] 6 kg

Anslutningsplatta

Connection plate

plate



ZKE 11-0355 2.1 kg

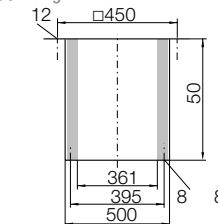
Dukstos, inlopp

Inlet connection (flexible)

ZDR 30-0355 17 kg

Ljuddämpare inloppssida

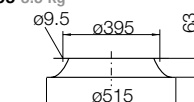
Inlet silencer



ZKD 01-0355 3.5 kg

Inloppskona med fläns

Flanged inlet cone



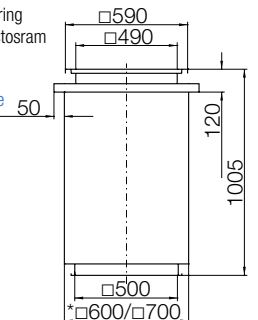
G-350 [St]

Takgenomföring inkl. fällbar stosram

*EI30/EI60

Roof duct with Foldable frame

*EI30/EI60

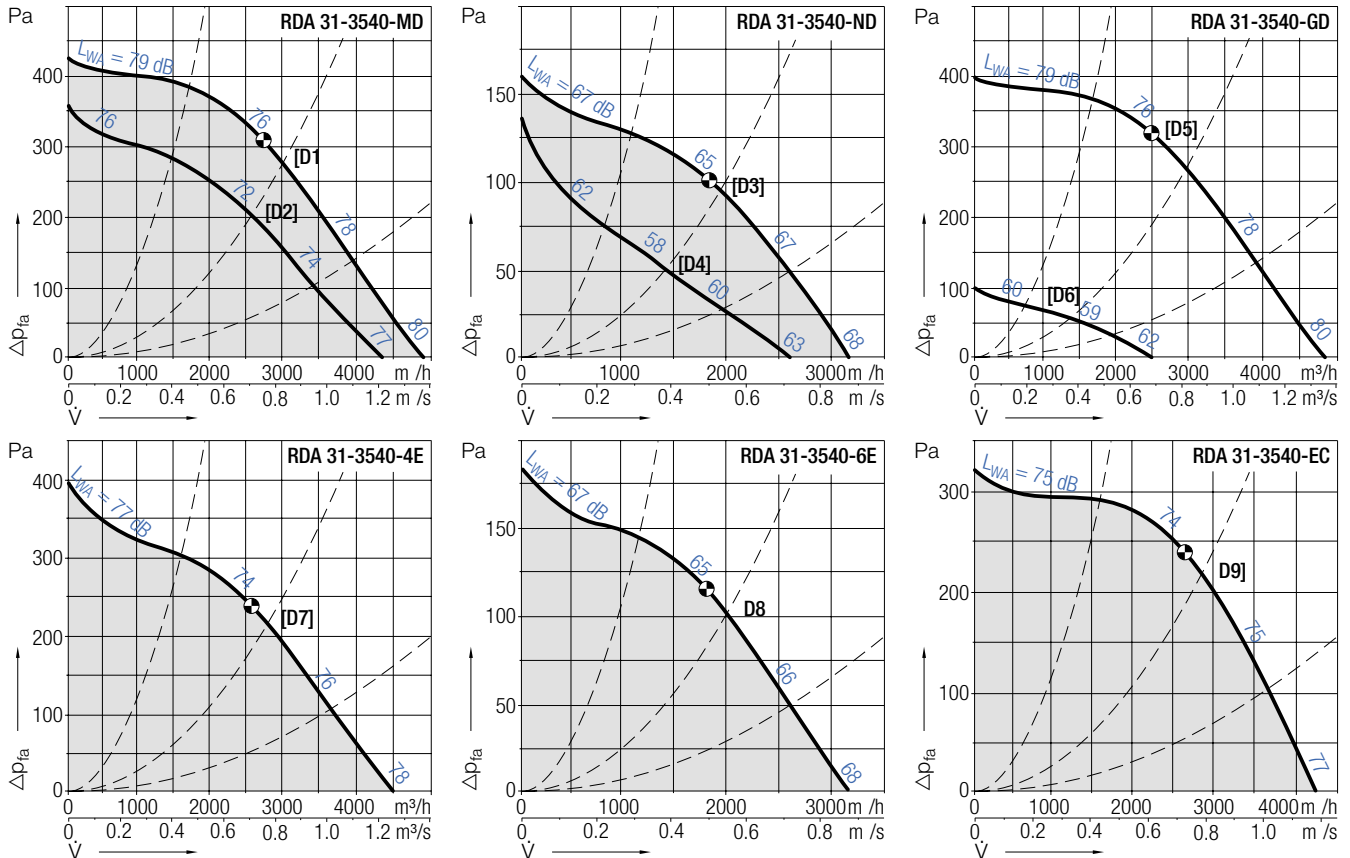


RDA 31-/32-3540

RDA genovent		Tekniska data (V_{max} / L_{WAB} giltig för RDA 31)							Technical Data (V_{max} / L_{WAB} valid to RDA 31)					
ur- vor	Pol- tal	Spänning/ anslutning	Frek- vens	Varvtal	Max. effekt- förbrukning	Märk- ström	Startström/ Märkström	V_{max}	L_{WAB} vid V_{max}	onden- sator	Skyddskl./ Isolationskl.	Vikt 31/32	Media- temp.	
Curves	Poles	Voltage/ Connection	Fre- quency	Speed	Max. power consumption	Nominal current	Starting/Full load current	V_{max}	L_{WAB} at V_{max}	Capa- citor	Protection/ Temp. class	Weight 31/32	Media temp.	
RDA 31-/32-	V	Hz	v/min	kW	A		m ³ /h		dB	μF		kg	°C	
3540-MD•	[D1][D2]	4/4	400, 3~ Δ/Y	50	1400/1190	0.58/0.44	1.35/0.74	3.4	4890/4320	80/77	-	IP44/F	29/44	-20...+60
3540-ND•	[D3][D4]	6/6	400, 3~ Δ/Y	50	890/ 690	0.22/0.13	0.55/0.23	2.0	3150/2590	68/63	-	IP44/F	31/43	-20...+60
3540-GD	[D5][D6]	4/8	400, 3~ Y/Y	50	1380/ 700	0.62/0.12	1.20/0.38	3.7	4820/2450	80/62	-	IP54/F	29/44	-20...+60
3540-4E•	[D7]	4	230, 1~	50	1255	0.49	2.45	1.7	4500	78	12	IP44/F	29/44	-20...+55
3540-6E•	[D8]	6	230, 1~	50	880	0.20	1.25	1.5	3150	68	5	IP44/F	27/42	-20...+60
3540-EC•	[D9]	-	230, 1~	50/60	1260	0.40	1.80	-	4230	77	-	IP44/B	31/-	-20...+40

• (även) steglöst varvtalsreglerbar med spänning | • (also) stepless speed controllable by tension variation

RDA genovent Kurvor Curves $\rho_1=1.15 \text{ kg/m}^3$



RDA genovent	Tillbehör					Accessories			
	Arbets- brytare	Motorskydds- brytare	Transformator 7-stegs	Transformator 5-stegs	Vridtyristor	Varvtalsregl. elektronisk	Varvtalsregl. mikroprocessor	Varvtalsregl. elektronisk	Potentiometer
	Isolator	Motor protection unit	Transformer 7 taps	Transformer 5-steps	Speed regulator electronic	Speed regulator electronic	Speed regulator micro processor	Speed controller electronic	Speed regulator module
RDA 31-/32-ESH	ESM	ETO	ETH	EPH	EPA	EPA	EPA	EPA	EGH
3540-MD•	21-0030-65	04-0040-8D	10-0020-8D	35-0020-8D	-	-	-	83-0050-8D	-
3540-ND•	21-0030-65	04-0040-8D	10-0010-8D	35-0010-8D	-	-	-	83-0050-8D	-
3540-GD	21-0030-65	03-0040-8D⑥	-	-	-	-	-	-	-
3540-4E•	21-0030-25	01-0020-5E	10-0040-5E	35-0040-5E	03-0040-5E	03-0060-5E	-	83-0060-5E	-
3540-6E•	21-0030-22	-	10-0018-5E	31-0020-5E	03-0020-5E	03-0060-5E	93-0023-5E	83-0060-5E	-
3540-EC•	21-0030-22	-	-	-	-	-	-	-	EGH 01

RDA 31-/32-3540

RDA *genovent*



RDA 31-



RDA 32-

Ljuddämpat utförande
Noise attenuated version

RDA 31- *genovent*

Gebhardt ytterrotormotor med monterat radialfläkt hjul. Alla EC-typerna med integrerad kommuteringsenhet.

RDA 32- *genovent*

Extra ljudabsorberande beklädnad för reducering av ljud-effektnivån med ca 7 dB(A) på avluftssidan.

Flödet reduceras vid samma tryckökning med 5-10 % jämfört med typ RDA 31.

Tillbehör / Index

- ② Lutning upp till 45° i steg om 5° är möjlig
- ⑥ En skyddsfunktion vid högt varvtal garanteras endast om en Dahlander-brygga finns

RDA 31- *genovent*

Gebhardt external rotor motor with impeller fitted directly. All EC-types with integrated Commutation unit.

RDA 32- *genovent*

Additionally equipped with sound absorbing lining for A-sound power level reduction of about 7 dB at discharge. The flow rate to RDA 31 will be reduced of 5-10 % at same pressure rise.

Accessories / Index

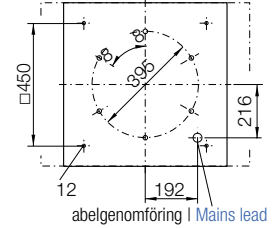
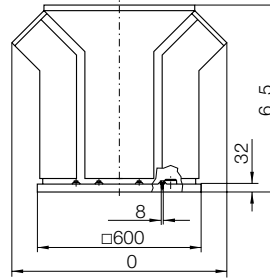
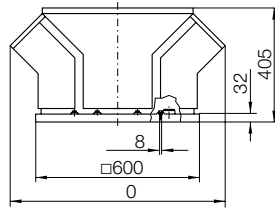
- ② inclination in 5° steps up to 45° possible
- ⑥ A protection for high speed is only active if Dahlander bridge is on place

Mått i mm, vi förbehåller oss rätten till ändringar.

Dimensions in mm, Subject to change.

RDA 31-3540-..

RDA 32-3540-..



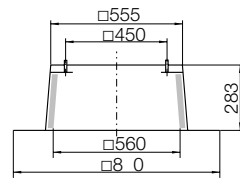
Tillbehör

ZBS 01-0056 [Al] 5 kg

ZBS 20-0056 [St] 10 kg

Stos för platta tak

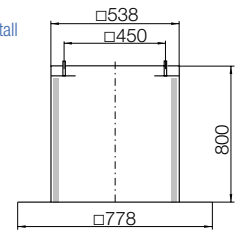
Flat roof upstand



ZBS 23-0056 [St] 14 kg

Stos för platta tak, hög

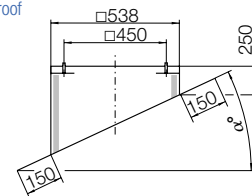
Flat roof upstand tall



ZBS 09-0056-② [Al] 6 kg

Stos för snedtak

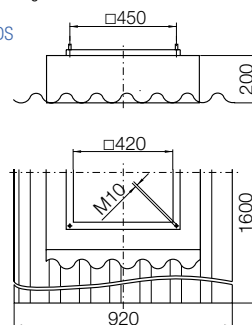
Inclined roof upstand



ZBS 11-0056 [GF] 12 kg

Stos för korrugerat tak

Soaker sheet WDS



Accessories

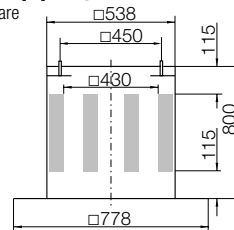
ZDS 01-0056 [Al] 29 kg

ZDS 20-0056 [St] 40 kg

Stosljuddämpare

Upstand silencer

①

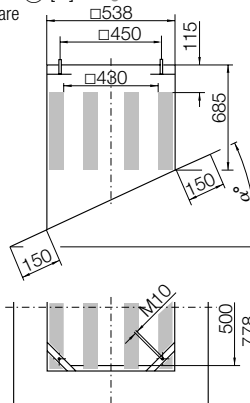


ZDS 09-0056-② [Al] 29 kg

Stosljuddämpare för snedtak

Inclined roof upstand silencer

①

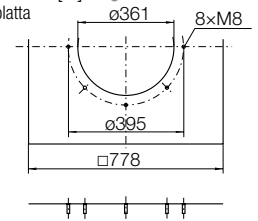


ZBU 01-0056-35 [St] 6 kg

Anslutningsplatta

Connection plate

abelgenomföring | Mains lead

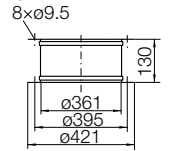


ZKE 11-0355 2.1 kg

Dukstos, inlopp

Inlet connection (flexible)

8xø9.5

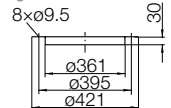


ZKF 11-0355 0.9 kg

Motfläns, inlopp

Mating flange

8xø9.5

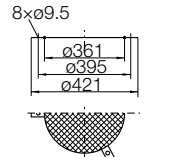


ZSG 04-0355 0.6 kg

Inloppsgaller

Mesh inlet guard

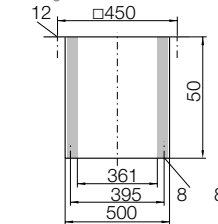
8xø9.5



ZDR 30-0355 17 kg

Ljuddämpare inloppssida

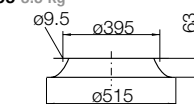
Inlet silencer



ZKD 01-0355 3.5 kg

Inloppskona med fläns

Flanged inlet cone



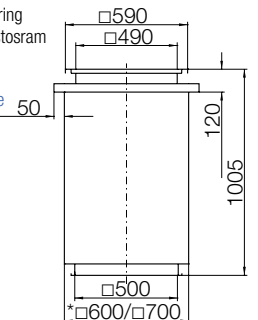
G-350 [St]

Takgenomföring inkl. fällbar stosram

*EI30/EI60

Roof duct with Foldable frame

*EI30/EI60

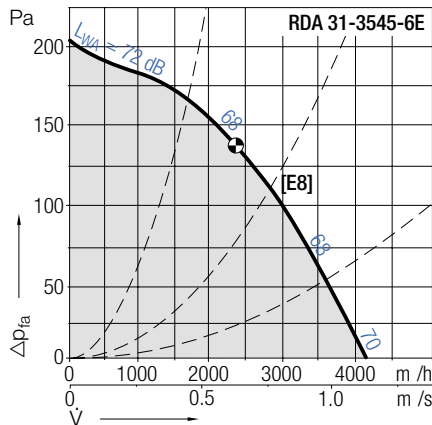
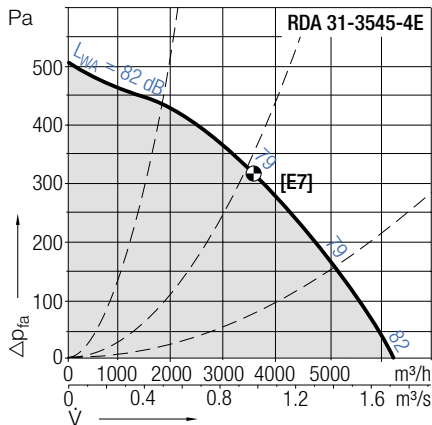
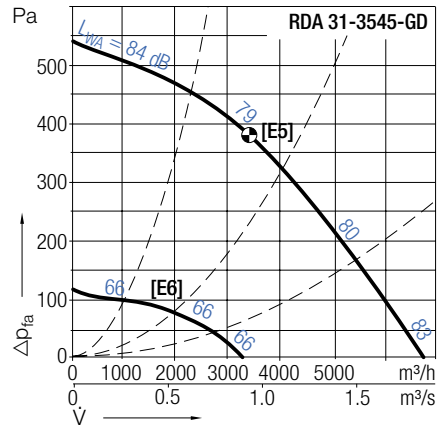
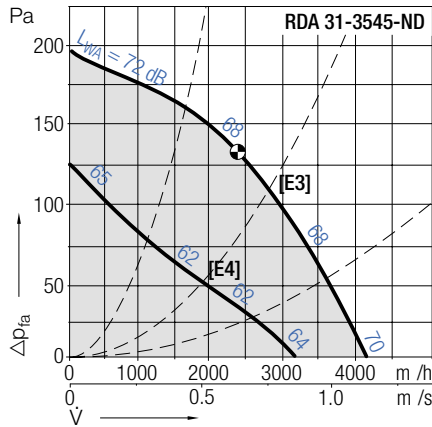
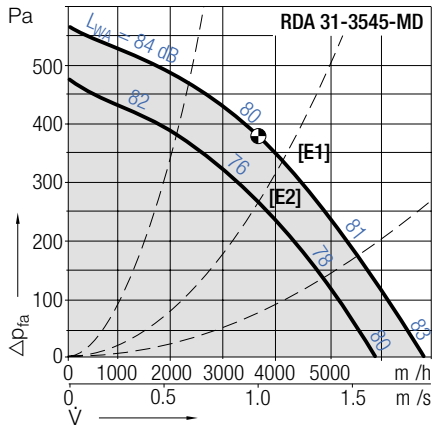


RDA 31-/32-3545

RDA genovent		Tekniska data (V_{max} / L_{WA8} giltig för RDA 31)							Technical Data (V_{max} / L_{WA8} valid to RDA 31)					
ur- vor	Pol- tal	Spänning/ anslutning	Frek- vens	Varvtal	Max. effekt- förbrukning	Märk- ström	Startström/ Märkström	V_{max}	L_{WA8} vid V_{max}	onden- sator	Skyddskl./ Isolationskl.	Vikt 31/32	Media- temp.	
Curves	Poles	Voltage/ Connection	Fre- quency	Speed	Max. power consumption	Nominal current	Starting/Full load current	V_{max}	L_{WA8} at V_{max}	Capa- citor	Protection/ Temp. class	Weight 31/32	Media temp.	
RDA 31-/32-	V	Hz	v/min	kW	A			m^3/h	dB	μF		kg	$^{\circ}C$	
3545-MD• [E1 E2]	4/4	400, 3~ Δ/Y	50	1420/1250	0.95/0.76	2.30/1.30	4.1	6850/5930	83/80	-	IP44/F	31/48	-20...+60	
3545-ND• [E3 E4]	6/6	400, 3~ Δ/Y	50	860/ 600	0.30/0.17	0.67/0.32	2.2	4100/3100	70/64	-	IP44/F	31/47	-20...+60	
3545-GD [E5 E6]	4/8	400, 3~ Y/Y	50	1380/ 690	1.00/0.15	2.00/0.54	3.9	6790/3290	83/66	-	IP54/F	34/52	-20...+60	
3545-4E• [E7]	4	230, 1~	50	1300	0.95	4.40	2.0	6250	82	20	IP44/F	34/50	-20...+55	
3545-6E• [E8]	6	230, 1~	50	850	0.32	1.65	1.4	4150	70	8	IP44/F	37/53	-20...+60	

• (även) steglöst varvtalsreglerbar med spänning | • (also) stepless speed controllably by tension variation

RDA genovent Kurvor Curves $\rho_1=1.15 \text{ kg/m}^3$



RDA genovent Tillbehör Accessories

	Arbets- brytare	Motorskydds- brytare	Transformator 7-steps	Transformator 5-steps	Vridtyristor	Varvtalsregl. elektronisk	Varvtalsregl. mikroprocessor	Varvtalsregl. elektronisk
	Isolator	Motor protection unit	Transformer 7 taps	Transformer 5-steps	Speed regulator electronic	Speed regulator electronic	Speed regulator micro processor	Speed controller electronic
RDA 31-/32-ESH	ESM	ETO	ETH	EPH	EPA	EPA	EPA	EPA
3545-MD•	21-0030-65	04-0040-8D	10-0040-8D	36-0040-8D	-	-	-	83-0050-8D
3545-ND•	21-0030-65	04-0040-8D	10-0010-8D	35-0010-8D	-	-	-	83-0050-8D
3545-GD	21-0030-65	03-0040-8D⑥	-	-	-	-	-	-
3545-4E•	21-0030-25	01-0020-5E	10-0070-5E	35-0070-5E	-	03-0060-5E	-	83-0060-5E
3545-6E•	21-0030-22	-	10-0018-5E	31-0020-5E	03-0020-5E	03-0060-5E	93-0023-5E	83-0060-5E

RDA 31-/32-3545

RDA genovent



RDA 31-



RDA 32-

Ljuddämpat utförande
Noise attenuated version

RDA 31- genovent

Gebhardt ytterrotormotor med monterat radialfläkthjul.

RDA 32- genovent

Extra ljudabsorberande beklädnad för reducering av ljud-effektnivån med ca 7 dB(A) på avgiftssidan.
Flödet reduceras vid samma tryckökning med 5-10 % jämfört med typ RDA 31.

Tillbehör / Index

② Lutning upp till 45° i steg om 5° är möjlig

⑥ En skyddsfunktion vid högt varvtal garanteras endast om en Dahlander-brygga finns

RDA 31- genovent

Gebhardt external rotor motor with impeller fitted directly.

RDA 32- genovent

Additionally equipped with sound absorbing lining for A-sound power level reduction of about 7 dB at discharge.
The flow rate to RDA 31 will be reduced of 5-10 % at same pressure rise.

Accessories / Index

② inclination in 5° steps up to 45° possible

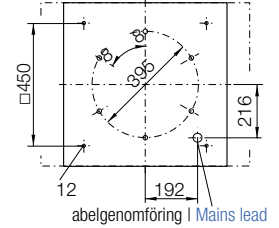
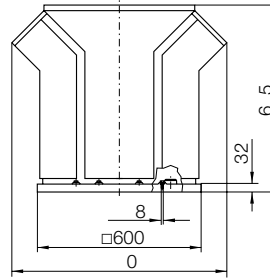
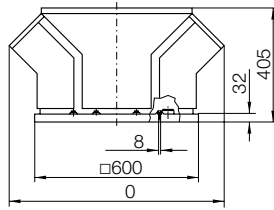
⑥ A protection for high speed is only active if Dahlander bridge is on place

Mått i mm, vi förbehåller oss rätten till ändringar.

Dimensions in mm, Subject to change.

RDA 31-3545-..

RDA 32-3545-..

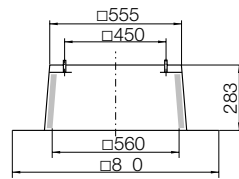


Tillbehör

ZBS 01-0056 [Al] 5 kg

ZBS 20-0056 [St] 10 kg

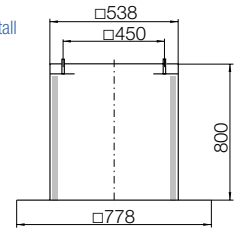
Stos för platta tak
Flat roof upstand



ZBS 23-0056 [St] 14 kg

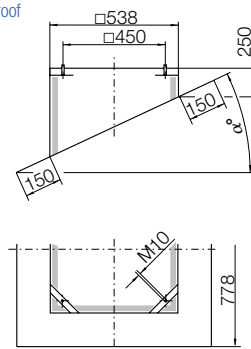
Stos för platta tak, hög

Flat roof upstand tall



ZBS 09-0056-② [Al] 6 kg

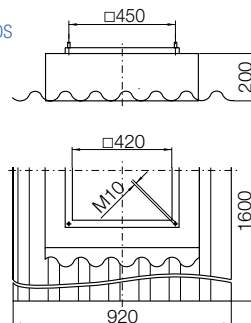
Stos för snedtak
Inclined roof upstand



ZBS 11-0056 [GF] 12 kg

Stos för korrugerat tak

Soaker sheet WDS



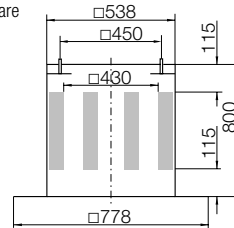
Accessories

ZDS 01-0056 [Al] 29 kg

ZDS 20-0056 [St] 40 kg

Stosljuddämpare
Upstand silencer

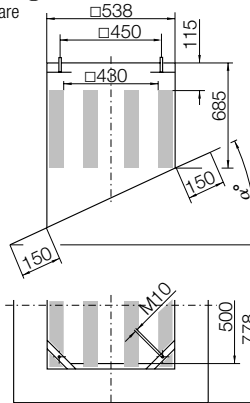
①



ZDS 09-0056-② [Al] 29 kg

Stosljuddämpare för snedtak
Inclined roof upstand silencer

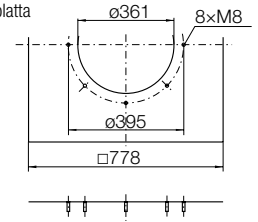
①



ZBU 01-0056-35 [St] 6 kg

Anslutningsplatta
Connection plate

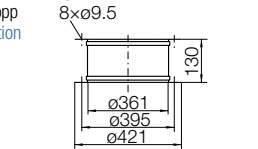
abelgenomföring | Mains lead



ZKE 11-0355 2.1 kg

Dukstos, inlopp
Inlet connection (flexible)

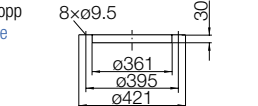
8xø9.5



ZKF 11-0355 0.9 kg

Motfläns, inlopp
Mating flange

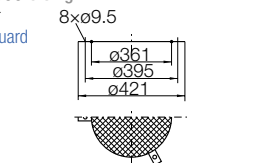
8xø9.5



ZSG 04-0355 0.6 kg

Inloppsgaller
Mesh inlet guard

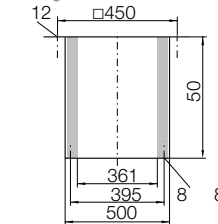
8xø9.5



ZDR 30-0355 17 kg

Ljuddämpare inloppssida
Inlet silencer

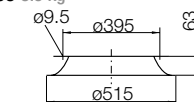
12



ZKD 01-0355 3.5 kg

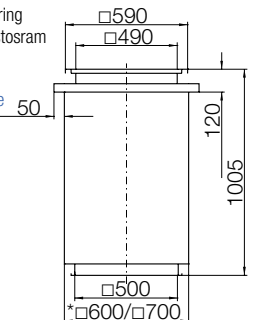
Inloppskona med fläns
Flanged inlet cone

ø9.5



G-350 [St]

Takgenomföring inkl. fällbar stosram
*EI30/EI60
Roof duct with Foldable frame
*EI30/EI60

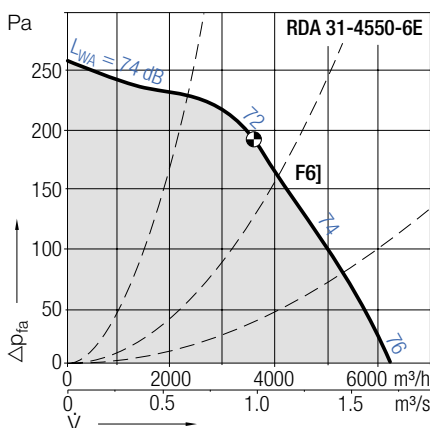
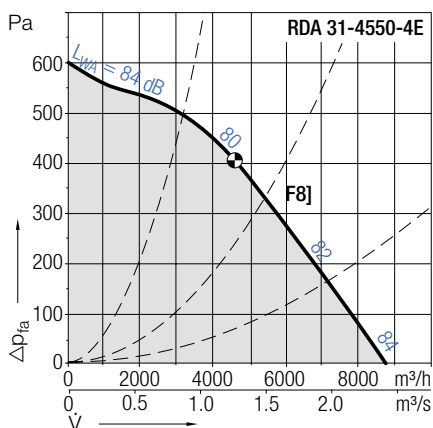
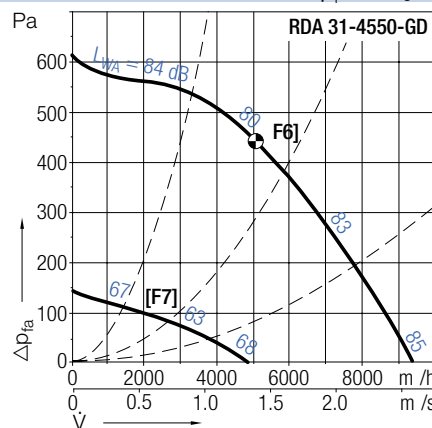
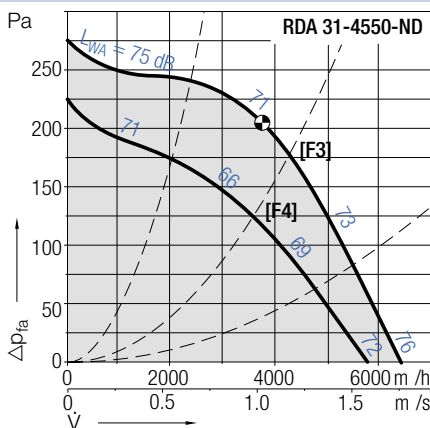
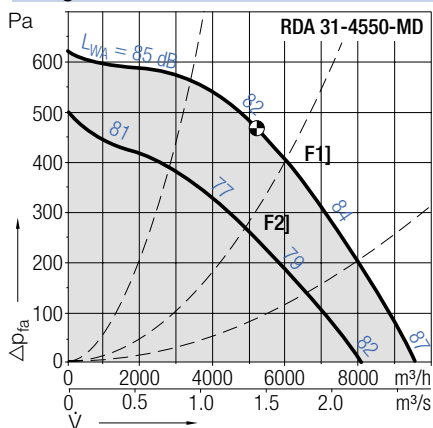


RDA 31-/32-4550

RDA genovent		Tekniska data (V_{max} / L_{WA8} giltig för RDA 31)							Technical Data (V_{max} / L_{WA8} valid to RDA 31)					
r- vor	Pol- tal	Spänning/ ansl tning	Frek- vens	Varvtal	Max. effekt- förbr kning	Märk- ström	Startström/ Märkström	V_{max}	L_{WA8} vid V_{max}	onden- sator	Skydds- Isolationskl.	Vikt	Media- temp.	
C rves	Poles	Voltage/ Connection	Fre- q ency	Speed	Max. power cons mption	Nominal c rrent	Starting/F ll load c rrent	V_{max}	L_{WA8} at V_{max}	Capa- citor	Protection/ Temp. class	Weight 31/32	Media temp.	
RDA 31-/32-	V	Hz	v/min	kW	A			m^3/h	dB	μF		kg	$^{\circ}C$	
4550-MD	[F1 F2]	4/4	400, 3~ Δ/Y	50	1350/1100	1.60/1.05	3.20/1.80	3.8	9580/8090	87/82	-	IP44/F	55/71	-20...+60
4550-ND	[F3 F4]	6/6	400, 3~ Δ/Y	50	930/ 780	0.52/0.38	1.30/0.69	3.3	6450/5800	76/72	-	IP44/F	44/70	-20...+60
4550-GD	[F5 F6]	4/8	400, 3~ YY/Y	50	1320/ 670	1.62/0.25	2.90/0.77	3.3	9380/4850	85/68	-	IP54/F	62/75	-20...+50
4550-4E	[F8]	4	230, 1~	50	1250	1.39	6.50	1.9	8800	84	30	IP44/F	48/74	-20...+60
4550-6E	[F9]	6	230, 1~	50	890	0.52	2.65	1.8	6250	76	12	IP44/F	37/69	-20...+45

• (även) steglöst varvtalsreglerbar med spänning | • (also) stepless speed controllabale by tension variation

RDA genovent Kurvor Curves $\rho_1=1.15 \text{ kg/m}^3$



RDA genovent Tillbehör Accessories

	Arbets- brytare	Motorskydds- brytare	Transformator 7-steps	Transformator 5-steps	Vridtyristor	Varvtalsregl. elektronisk	Varvtalsregl. mikroprocessor	Varvtalsregl. elektronisk
	Isolator	Motor protection nit	Transformer 7 taps	Transformer 5-steps	Speed reg lator electronic	Speed reg lator electronic	Speed reg lator micro processor	Speed controller electronic
RDA 31-/32-ESH	ESM	ETO	ETH	EPH	EPA	EPA	EPA	EPA
4550-MD	21-0030-65	04-0040-8D	10-0040-8D	36-0040-8D	-	-	-	83-0050-8D
4550-ND	21-0030-65	04-0040-8D	10-0020-8D	35-0020-8D	-	-	-	83-0050-8D
4550-GD	21-0030-65	03-0040-8D	-	-	-	-	-	-
4550-4E	21-0030-25	01-0020-5E	10-0070-5E	35-0070-5E	-	03-0100-5E	-	83-0100-5E
4550-6E	21-0030-25	01-0020-5E	10-0040-5E	35-0040-5E	03-0040-5E	03-0060-5E	-	83-0060-5E

RDA 31-/32-4550

RDA genovent



RDA 31-



RDA 32-

Lj dämpat tförande
Noise atten ated version

RDA 31- genovent

Gebhardt ytterrotormotor med monterat radialfläktj l.

RDA 32- genovent

Extra lj dabsorberande beklädnad för red cering av lj d-effektnivån med ca 7 dB(A) på avl ftsidan. Flödet red ceras vid samma tryckökning med 5-10 % jämfört med typ RDA 31.

Tillbehör / Index

- ② L trning pp till 45° i steg om 5° är möjlig
- ⑥ En skyddsf nktion vid högt varvtal garanteras endast om en Dahlander-brygga finns

RDA 31- genovent

Gebhardt external rotor motor with impeller fitted directly.

RDA 32- genovent

Additionally eq ipped with so nd absorbing lining for A- so nd power level red ction of abo t 7 dB at discharge. The flow rate to RDA 31 will be red ced of 5-10 % at same press re rise.

Accessories / Index

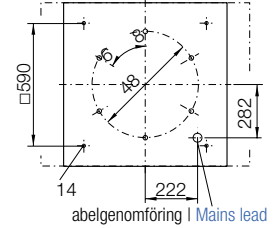
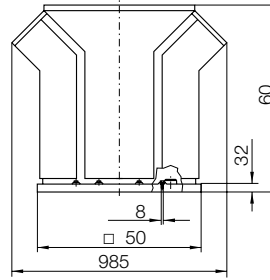
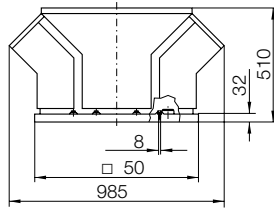
- ② inclination in 5° steps p to 45° possible
- ⑥ A protection for high speed is only active if Dahlander bridge is on place

Mått i mm, vi förbehåller oss rätten till ändringar.

Dimensions in mm, Subject to change.

RDA 31-4550-..

RDA 32-4550-..



Tillbehör

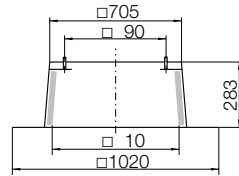
ZBS 01-0071 [Al] 8 kg

ZBS 20-0071 [St] 16 kg

Stos för platta tak

Flat roof

pstand

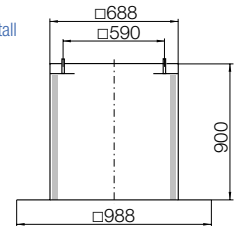


ZBS 23-0071 [St] 20 kg

Stos för platta tak, hög

Flat roof

pstand tall

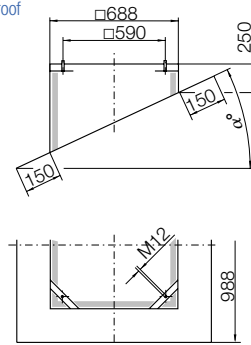


ZBS 09-0071-② [Al] 9 kg

Stos för snedtak

Inclined roof

pstand

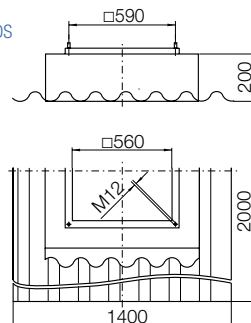


ZBS 11-0071 [GF] 29 kg

Stos för korr gerat tak

Soaker

sheet WDS



Accessories

ZDS 01-0071 [Al] 57 kg

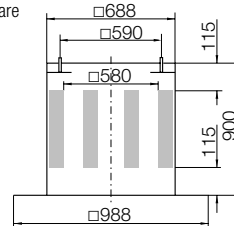
ZDS 20-0071 [St] 79 kg

Stoslj ddämpare

Upstand

silencer

①



ZDS 09-0071-② [Al] 57 kg

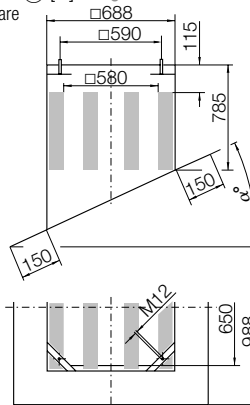
Stoslj ddämpare för snedtak

Inclined roof

pstand

silencer

①

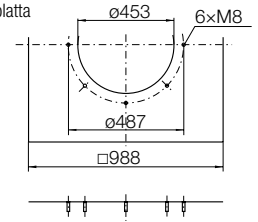


ZBU 01-0071-45 [St] 10 kg

Ansl trningsplatta

Connection

plate

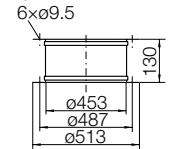


ZKE 11-0450 2.7 kg

D kstos, inlopp

Inlet connection

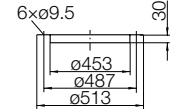
(flexible)



ZKF 11-0450 1.2 kg

Motfläns, inlopp

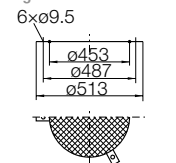
Mating flange



ZSG 04-0450 0.7 kg

Inloppsgaller

Mesh inlet g ard



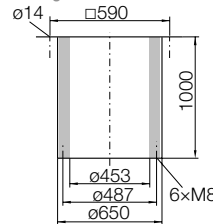
ZDR 30-0450 22 kg

Lj ddämpare

inloppssida

Inlet

silencer



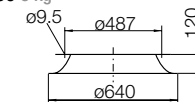
ZKD 01-0450 5 kg

Inloppskona

med fläns

Flanged

inlet cone



G-450 [St]

Takgenomföring

inkl. fällbar stosram

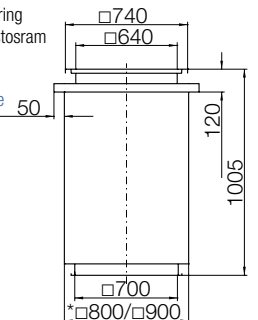
*EI30/EI60

Roof d ct

with Foldable

frame

*EI30/EI60

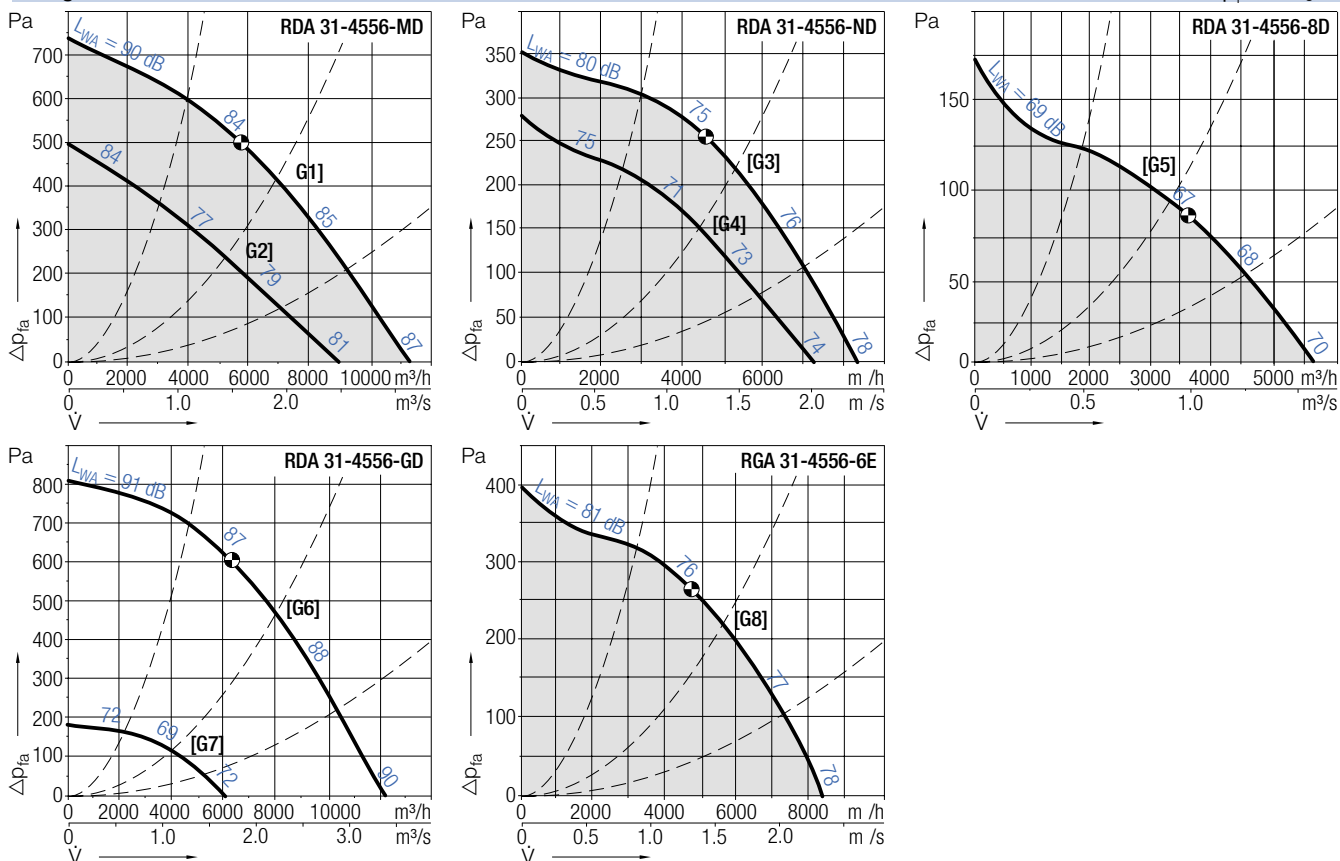


RDA 31-/32-4556

RDA genovent		Tekniska data (V_{max} / L_{WAB} giltig för RDA 31)							Technical Data (V_{max} / L_{WAB} valid to RDA 31)				
r- vor	Pol- tal	Spänning/ ansl tning	Frek- vens	Varvtal	Max. effekt- förbr kning	Märk- ström	Startström/ Märkström	V_{max}	L_{WAB} vid V_{max}	onden- sator	Skydds- Isolationskl.	Vikt 31/32	Media- temp.
C rves	Poles	Voltage/ Connection	Fre- q ency	Speed	Max. power cons mption	Nominal c rrent	Starting/F ll load c rrent	V_{max}	L_{WAB} at V_{max}	Capa- citor	Protection/ Temp. class	Weight 31/32	Media temp.
RDA 31-/32-	V	Hz	v/min	kW	A			m^3/h	dB	μF		kg	$^{\circ}C$
4556-MD • [G1 G2]	4/4	400, 3~ Δ/Y	50	1270/ 960	2.40/1.46	4.30/2.4	3.4	11290/8980	87/81	-	IP54/F	73/90	-20...+45
4556-ND • [G3 G4]	6/6	400, 3~ Δ/Y	50	920/ 770	0.82/0.59	2.10/1.1	3.5	8300/7250	78/74	-	IP44/F	58/89	-20...+60
4556-8D • [G5]	8	400, 3~ Δ	50	610	0.38	0.93	1.9	5650	70	-	IP54/F	53/89	-20...+60
4556-GD [G6 G7]	4/8	400, 3~ YY/Y	50	1400/ 710	3.00/0.41	5.20/1.2	5.0	12200/6100	90/72	-	IP54/F	73/90	-20...+45
4556-6E [G8]	6	230, 1~	50	940	0.93	5.75	2.2	8400	78	25	IP44/F	50/67	-20...+55

• (även) steglöst varvtalsreglerbar med spänning | • (also) stepless speed controllable by tension variation

RDA genovent Kurvor Curves $\rho_1=1.15 \text{ kg/m}^3$



RDA genovent	Tillbehör					Accessories		
	Arbets- brytare	Motorskydds- brytare	Transformator 7-steps	Transformator 5-steps	Vridtyristor	Varvtalsregl. elektronisk	Varvtalsregl. mikroprocessor	Varvtalsregl. elektronisk
	Isolator	Motor protection nit	Transformer 7 taps	Transformer 5-steps	Speed reg lator electronic	Speed reg lator electronic	Speed reg lator micro processor	Speed controller electronic
RDA 31-/32-ESH	ESM	ETO	ETH	EPH	EPA	EPA	EPA	EPA
4556-MD •	21-0030-65	04-0040-8D	10-0065-8D	36-0070-8D	-	-	-	83-0050-8D
4556-ND •	21-0030-65	04-0040-8D	10-0040-8D	36-0040-8D	-	-	-	83-0050-8D
4556-8D •	21-0030-35	01-0040-8D	10-0010-8D	35-0010-8D	-	-	-	83-0050-8D
4556-GD	21-0030-65	03-0040-8D ⑥	-	-	-	-	-	-
4556-6E	21-0030-25	01-0020-5E	10-0070-5E	35-0070-5E	-	03-0060-5E	-	83-0060-5E

RDA 31-/32-4556

RDA genovent



RDA 31-



RDA 32-

Lj dämpat tförande
Noise atten ated version

RDA 31- genovent

Gebhardt ytterrotormotor med monterat radialfläktj l.

RDA 32- genovent

Extra lj dabsorberande beklädnad för red cering av lj d-effektnivån med ca 7 dB(A) på avl ftsidan. Flödet red ceras vid samma tryckökning med 5-10 % jämfört med typ RDA 31.

Tillbehör / Index

- ② L trning pp till 45° i steg om 5° är möjlig
- ⑥ En skyddsf nktion vid högt varvtal garanteras endast om en Dahlander-brygga finns

RDA 31- genovent

Gebhardt external rotor motor with impeller fitted directly.

RDA 32- genovent

Additionally eq ipped with so nd absorbing lining for A- so nd power level red ction of abo t 7 dB at discharge. The flow rate to RDA 31 will be red ced of 5-10 % at same press re rise.

Accessories / Index

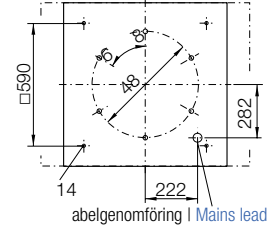
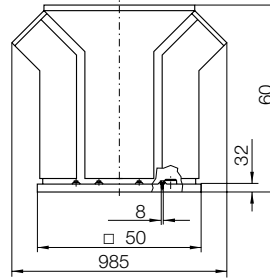
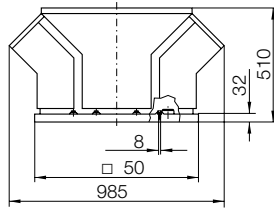
- ② inclination in 5° steps p to 45° possible
- ⑥ A protection for high speed is only active if Dahlander bridge is on place

Mått i mm, vi förbehåller oss rätten till ändringar.

Dimensions in mm, Subject to change.

RDA 31-4556-..

RDA 32-4556-..



Tillbehör

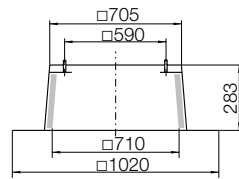
ZBS 01-0071 [Al] 8 kg

ZBS 20-0071 [St] 16 kg

Stos för platta tak

Flat roof

pstand

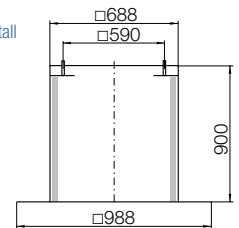


ZBS 23-0071 [St] 20 kg

Stos för platta tak, hög

Flat roof

pstand tall

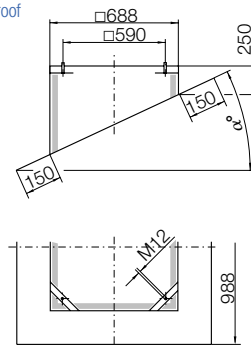


ZBS 09-0071-② [Al] 9 kg

Stos för snedtak

Inclined roof

pstand

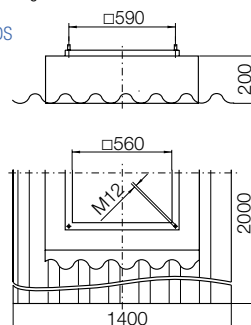


ZBS 11-0071 [GF] 29 kg

Stos för korr gerat tak

Soaker

sheet WDS



Accessories

ZDS 01-0071 [Al] 57 kg

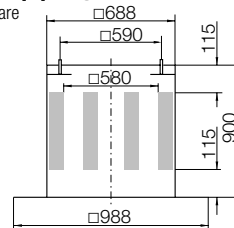
ZDS 20-0071 [St] 79 kg

Stoslj ddämpare

Upstand

silencer

①



ZDS 09-0071-② [Al] 57 kg

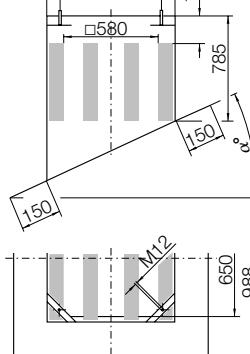
Stoslj ddämpare för snedtak

Inclined roof

pstand

silencer

①

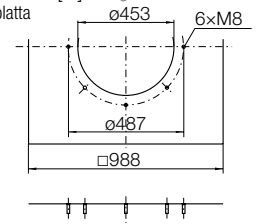


ZBU 01-0071-45 [St] 10 kg

Ansl trningsplatta

Connection

plate

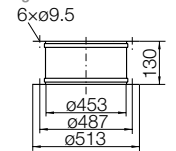


ZKE 11-0450 2.7 kg

D kstos, inlopp

Inlet connection

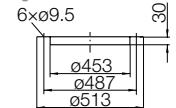
(flexible)



ZKF 11-0450 1.2 kg

Motfläns, inlopp

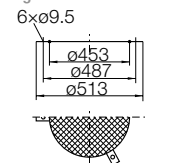
Mating flange



ZSG 04-0450 0.7 kg

Inloppsgaller

Mesh inlet g ard



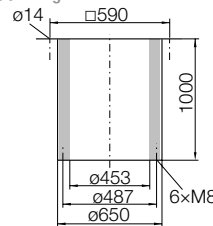
ZDR 30-0450 22 kg

Lj ddämpare

inloppssida

Inlet

silencer

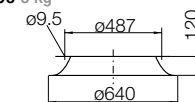


ZKD 01-0450 5 kg

Inloppskona

Flanged

inlet cone



G-450 [St]

Takgenomföring

inkl. fällbar stosram

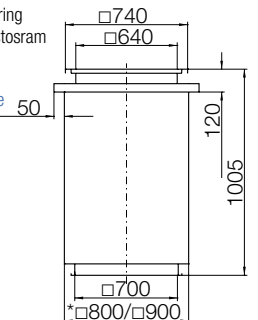
*EI30/EI60

Roof d ct

with Foldable

frame

*EI30/EI60

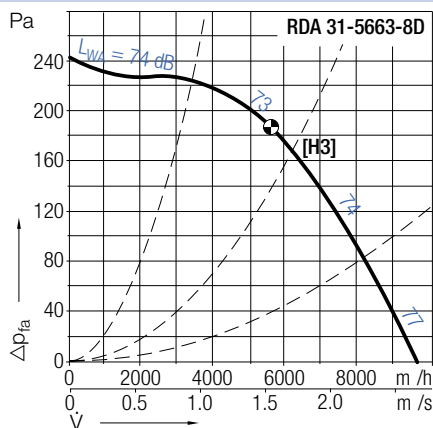
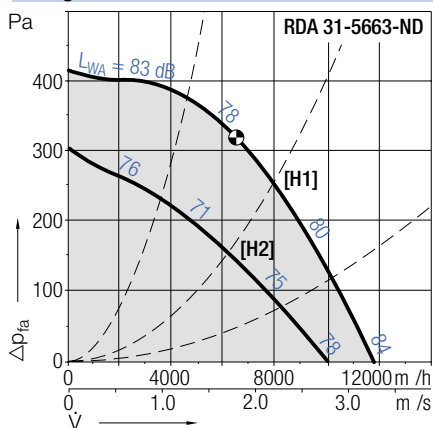


RDA 31-/32-5663

RDA <i>genovent</i>		Tekniska data (V_{max} / L_{WAB} giltig för RDA 31)						Technical Data (V_{max} / L_{WAB} valid to RDA 31)					
r- vor	Pol- tal	Spänning/ ansl tning	Frek- vens	Varvtal	Max. effekt- förbr kning	Märk- ström	Startström/ Märkström	V_{max}	L_{WAB} vid V_{max}	onden- sator	Skyddsklass/ Isolationskl.	Vikt 31/32	Media- temp.
C rves	Poles	Voltage/ Connection	Fre- q ency	Speed	Max. power cons mption	Nominal c rrent	Starting/F ll load c rrent	V_{max}	L_{WAB} at V_{max}	Capa- citor	Protection/ Temp. class	Weight 31/32	Media temp.
RDA 31-/32-	V	Hz	v/min	kW	A	m ³ /h	dB	μF	kg	°C			
5663-ND• [H1][H2]	6/6	400, 3~ Δ/Y	50	900/700	1.30/0.88	2.9/1.7	2.6	11800/10050	84/78	-	IP44/F	100/157	-20...+60
5663-8D• [H3]	8	400, 3~ Δ	50	700	0.76	1.8	2.8	9700	77	-	IP54/F	116/160	-20...+55

• (även) steglöst varvtalsreglerbar med spänning | • (also) stepless speed controllable by tension variation

RDA *genovent* Kurvor Curves $\rho_1=1.15 \text{ kg/m}^3$



RDA <i>genovent</i>	Tillbehör					Accessories		
Arbets- brytare	Motorskydds- brytare	Transformator 7-steps	Transformator 5-steps	Vridtyristor	Varvtalsregl. elektronisk	Varvtalsregl. mikroprocessor	Varvtalsregl. elektronisk	
Isolator	Motor protection nit	Transformer 7 taps	Transformer 5-steps	Speed reg lator electronic	Speed reg lator electronic	Speed reg lator micro processor	Speed controller electronic	
RDA 31-/32-ESH	ESM	ETO	ETH	EPH	EPA	EPA	EPA	
5663-ND•	21-0030-65	04-0040-8D	10-0040-8D	36-0040-8D	-	-	83-0050-8D	
5663-8D•	21-0030-35	01-0040-8D	10-0020-8D	35-0020-8D	-	-	83-0050-8D	

RDA 31-/32-5663

RDA genovent



RDA 31-



RDA 32-

Lj dämpat t förande
Noise atten ated version

RDA 31- genovent

Gebhardt ytterrotormotor med monterat radialfläkt hj l.

RDA 32- genovent

Extra lj dabsorberande beklädnad för red cering av lj d-effektnivån med ca 7 dB(A) på avl ftsidan. Flödet red ceras vid samma tryckökning med 5-10 % jämfört med typ RDA 31.

Tillbehör / Index

- ② L trning pp till 45° i steg om 5° är möjlig
- ⑥ En skyddsfnktion vid högt varvtal garanteras endast om en Dahlander-brygga finns

RDA 31- genovent

Gebhardt external rotor motor with impeller fitted directly.

RDA 32- genovent

Additionally eq ipped with so nd absorbing lining for A-so nd power level red ction of abo t 7 dB at discharge. The flow rate to RDA 31 will be red ced of 5-10 % at same press re rise.

Accessories / Index

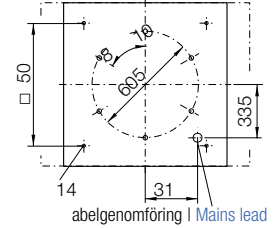
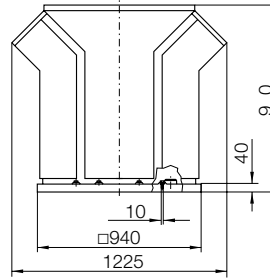
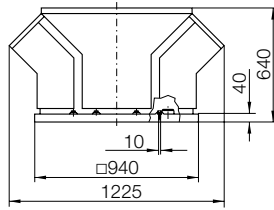
- ② inclination in 5° steps p to 45° possible
- ⑥ A protection for high speed is only active if Dahlander bridge is on place

Mått i mm, vi förbehåller oss rätten till ändringar.

Dimensions in mm, Subject to change.

RDA 31-5663-..

RDA 32-5663-..



Tillbehör

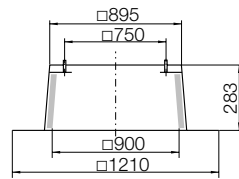
ZBS 01-0090 [Al] 13 kg

ZBS 20-0090 [St] 25 kg

Stos för platta tak

Flat roof

pstand

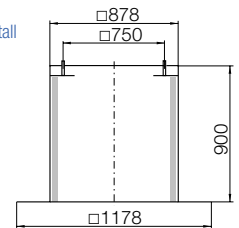


ZBS 23-0090 [St] 32 kg

Stos för platta tak, hög

Flat roof

pstand tall

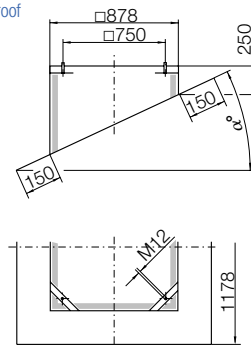


ZBS 09-0090-② [Al] 13 kg

Stos för snedtak

Inclined roof

pstand

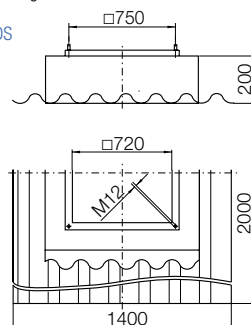


ZBS 11-0090 [GF] 4 kg

Stos för korr gerat tak

Soaker

sheet WDS



Accessories

ZDS 01-0090 [Al] 76 kg

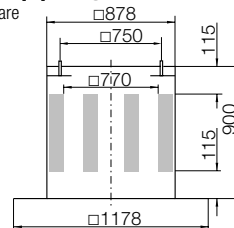
ZDS 20-0090 [St] 105 kg

Stoslj ddämpare

Upstand

silencer

①



ZDS 09-0090-② [Al] 76 kg

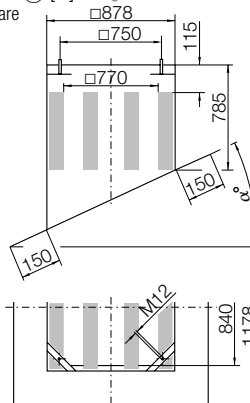
Stoslj ddämpare för snedtak

Inclined roof

pstand

silencer

①

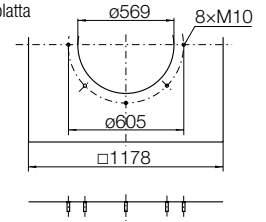


ZBU 01-0090-56 [St] 17 kg

Ansl trningsplatta

Connection

plate

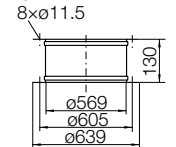


ZKE 11-0560 3.6 kg

D kstos, inlopp

Inlet connection

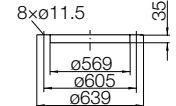
(flexible)



ZKF 11-0560 1.5 kg

Motfläns, inlopp

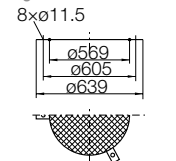
Mating flange



ZSG 04-0560 0.8 kg

Inloppsgaller

Mesh inlet g ard



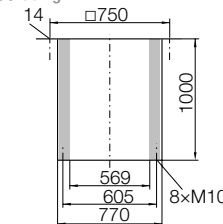
ZDR 30-0560 50 kg

Lj ddämpare

inloppssida

Inlet

silencer



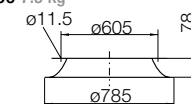
ZKD 01-0560 7.5 kg

Inloppskona

med fläns

Flanged

inlet cone



G-560 [St]

Takgenomföring

inkl. stosram

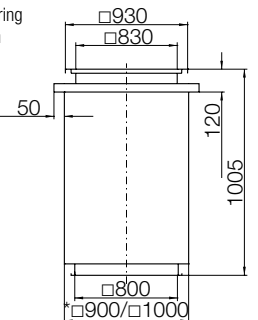
*EI30/EI60

Roof d ct

with

frame

*EI30/EI60

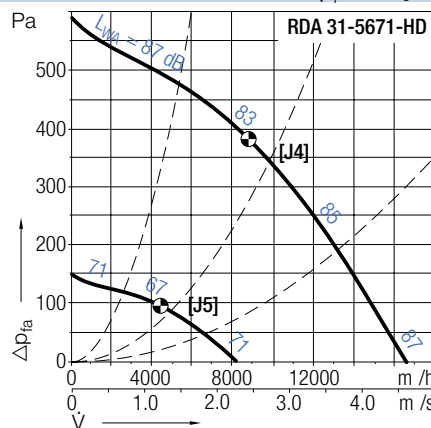
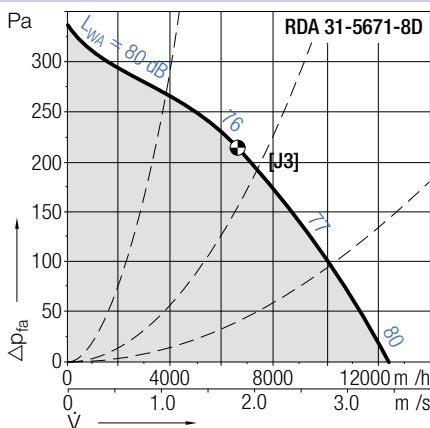
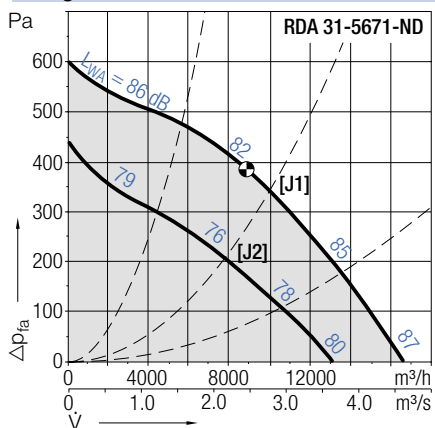


RDA 31-/32-5671

RDA genovent		Tekniska data (V_{max} / L_{WAB} giltig för RDA 31)							Technical Data (V_{max} / L_{WAB} valid to RDA 31)					
r- vor	Pol- tal	Spänning/ ansl tning	Frek- vens	Varvtal	Max. effekt- förbr kning	Märk- ström	Startström/ Märkström	V_{max}	L_{WAB} vid V_{max}	onden- sator	Skyddsklass/ Isolationskl.	Vikt 31/32	Media- temp.	
C rves	Poles	Voltage/ Connection	Fre- q ency	Speed	Max. power cons mption	Nominal c rrent	Starting/F ll load c rrent	V_{max}	L_{WAB} at V_{max}	Capa- citor	Protection/ Temp. class	Weight 31/32	Media temp.	
RDA 31-/32-	V	Hz	v/min	kW	A	m ³ /h	dB	μ F	kg	°C				
5671-ND• [J1 J2]	6/6	400, 3~ Δ /Y	50	880/680	2.5/1.5	5.0/2.8	3.6	16650/13200	87/80	-	IP54/F	116/171	-20...+45	
5671-8D• [J3]	8	400, 3~ Δ	50	650	1.2	2.7	2.6	12400	80	-	IP54/F	116/171	-20...+55	
5671-HD [J4 J5]	6/12	400, 3~ YY/Y	50	880/440	2.6/0.39	4.9/1.5	3.4/3.0	16500/ 8230	87/71	-	IP54/F	121/176	-20...+50	

• (även) steglöst varvtalsreglerbar med spänning | • (also) stepless speed controllable by tension variation

RDA genovent Kurvor Curves $\rho_1=1.15 \text{ kg/m}^3$



RDA genovent	Tillbehör					Accessories		
Arbets- brytare	Motorskydds- brytare	Transformator 7-steps	Transformator 5-steps	Vridtyristor	Varvtalsregl. elektronisk	Varvtalsregl. mikroprocessor	Varvtalsregl. elektronisk	
Isolator	Motor protection nit	Transformer 7 taps	Transformer 5-steps	Speed reg lator electronic	Speed reg lator electronic	Speed reg lator micro processor	Speed controller electronic	
RDA 31-/32-ESH	ESM	ETO	ETH	EPH	EPA	EPA	EPA	
5671-ND•	21-0030-65	04-0040-8D	10-0065-8D	36-0070-8D	-	-	83-0050-8D	
5671-8D•	21-0030-35	01-0040-8D	10-0040-8D	36-0040-8D	-	-	83-0050-8D	
5671-HD	21-0030-65	03-0040-8D ⑥	-	-	-	-	-	

RDA 31-/32-5671

RDA genovent



RDA 31-



RDA 32-

Lj dämpat tförande
Noise atten ated version

RDA 31- genovent

Gebhardt ytterrotormotor med monterat radialfläktj l.

RDA 32- genovent

Extra lj dabsorberande beklädnad för red cering av lj d-effektnivån med ca 7 dB(A) på avl ftsidan. Flödet red ceras vid samma tryckökning med 5-10 % jämfört med typ RDA 31.

Tillbehör / Index

- ② L trning pp till 45° i steg om 5° är möjlig
- ⑥ En skyddsf nktion vid högt varvtal garanteras endast om en Dahlander-brygga finns

RDA 31- genovent

Gebhardt external rotor motor with impeller fitted directly.

RDA 32- genovent

Additionally eq ipped with so nd absorbing lining for A-so nd power level red ction of abo t 7 dB at discharge. The flow rate to RDA 31 will be red ced of 5-10 % at same press re rise.

Accessories / Index

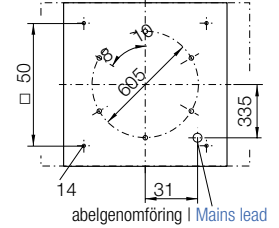
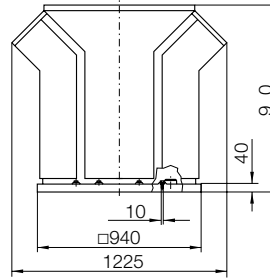
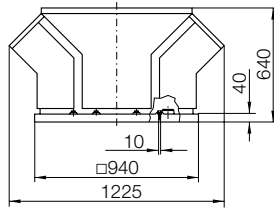
- ② inclination in 5° steps p to 45° possible
- ⑥ A protection for high speed is only active if Dahlander bridge is on place

Mått i mm, vi förbehåller oss rätten till ändringar.

Dimensions in mm, Subject to change.

RDA 31-5671-..

RDA 32-5671-..



Tillbehör

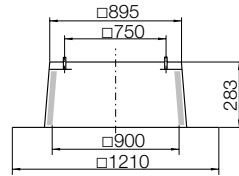
ZBS 01-0090 [Al] 13 kg

ZBS 20-0090 [St] 25 kg

Stos för platta tak

Flat roof

pstand

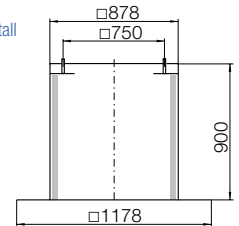


ZBS 23-0090 [St] 32 kg

Stos för platta tak, hög

Flat roof

pstand tall

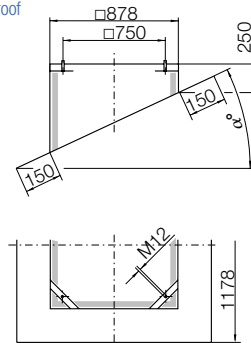


ZBS 09-0090-② [Al] 13 kg

Stos för snedtak

Inclined roof

pstand

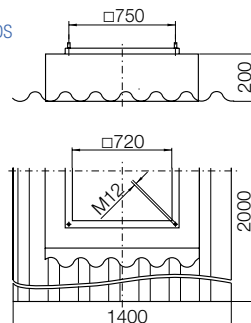


ZBS 11-0090 [GF] 4 kg

Stos för korr gerat tak

Soaker

sheet WDS



Accessories

ZDS 01-0090 [Al] 76 kg

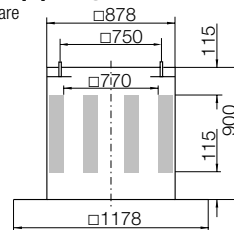
ZDS 20-0090 [St] 105 kg

Stoslj ddämpare

Upstand

silencer

①



ZDS 09-0090-② [Al] 76 kg

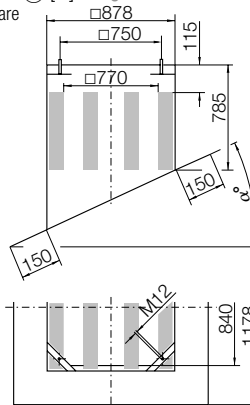
Stoslj ddämpare för snedtak

Inclined roof

pstand

silencer

①

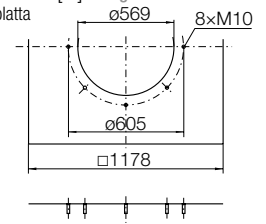


ZBU 01-0090-56 [St] 17 kg

Ansl tningsplatta

Connection

plate

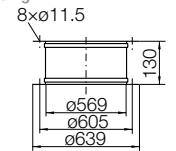


ZKE 11-0560 3.6 kg

D kstos, inlopp

Inlet connection

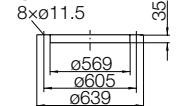
(flexible)



ZKF 11-0560 1.5 kg

Motfläns, inlopp

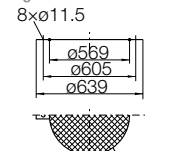
Mating flange



ZSG 04-0560 0.8 kg

Inloppsgaller

Mesh inlet g ard



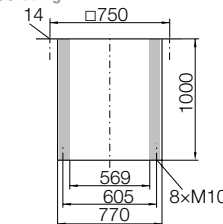
ZDR 30-0560 50 kg

Lj ddämpare

inloppssida

Inlet

silencer



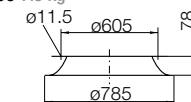
ZKD 01-0560 7.5 kg

Inloppskona

med fläns

Flanged

inlet cone



G-560 [St]

Takgenomföring

inkl. stosram

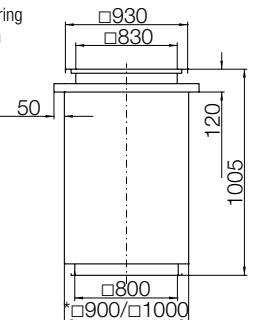
*EI30/EI60

Roof d ct

with

frame

*EI30/EI60

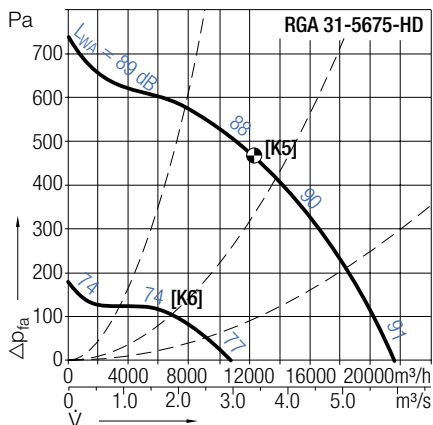
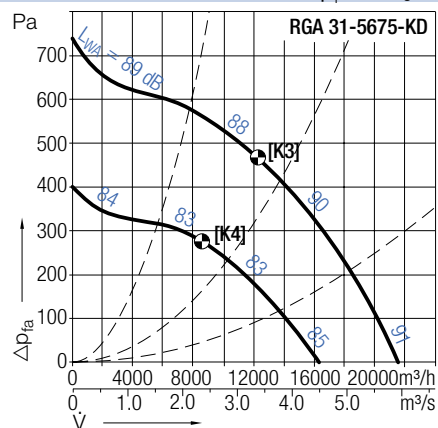
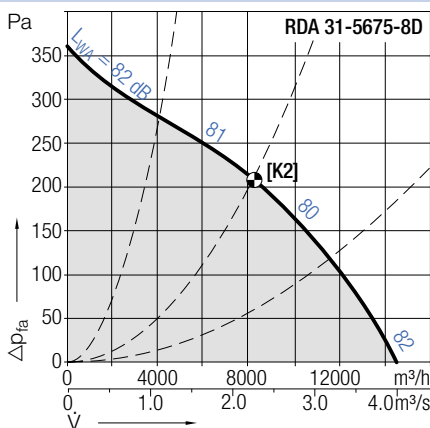
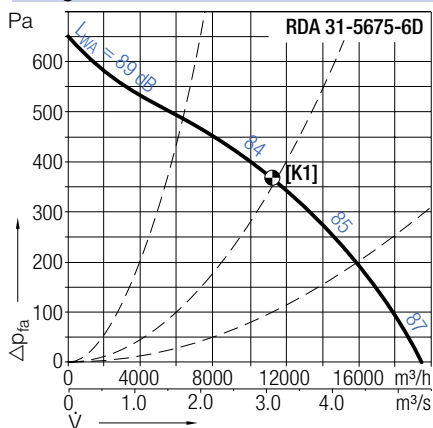


RDA 31-5675

RDA genovent		Tekniska data (V_{max} / L_{WAB} giltig för RDA 31)							Technical Data (V_{max} / L_{WAB} valid to RDA 31)					
r- vor	Pol- tal	Spänning/ ansl tning	Frek- vens	Varvtal	Max. effekt- förbr kning	Märk- ström	Startström/ Märkström	V_{max}	L_{WAB} vid V_{max}	onden- sator	Skyddskl./ Isolationskl.	Vikt 31/32	Media- temp.	
C rves	Poles	Voltage/ Connection	Fre- q ency	Speed	Max. power cons mption	Nominal c rrent	Starting/F ll load c rrent	V_{max}	L_{WAB} at V_{max}	Capa- citor	Protection/ Temp. class	Weight 31/32	Media temp.	
RDA 31-	V	Hz	v/min	kW	A			m^3/h	dB	μF		kg	$^{\circ}C$	
5675-6D*	[K1]	6	400, 3~ Δ	50	870	3,4	6,5	3,5	19500	87	-	IP54/F	102/-	-20...+50
5675-8D•	[K2]	8	400, 3~Y	50	650	1.6	3.3	2.5	14500	82	-	IP54/F	102/-	-20...+40
5675-KD	[K3 K4]	6/8	400, 3~Y/Y	50	970/720	4.6/2.1	10.5/4.9	6.0/5.5	21400/16200	91/85	-	IP54/F	183/-	-20...+55
5675-HD	[K5 K6]	6/12	400, 3~Y/Y	50	950/480	4.4/0.7	8.7/2.6	5.7/3.8	21400/10700	91/77	-	IP54/F	102/-	-20...+45

- (även) steglöst varvtalsreglerbar med spänning, * dessa typer går **inte** att varvtalsreglera med spänning I
- (also) stepless speed controllabale by tension variation, * these types do **not** have variable speed control by tension variation

RDA genovent Kurvor Curves $\rho_1=1.15 \text{ kg/m}^3$



RDA genovent	Tillbehör					Accessories		
	Arbets- brytare	Motorskydds- brytare	Transformator 7-stegs	Transformator 5-stegs	Vridtyristor	Varvtalsregl. elektronisk	Varvtalsregl. mikroprocessor	Varvtalsregl. elektronisk
	Isolator	Motor protection nit	Transformer 7 taps	Transformer 5-steps	Speed reg lator electronic	Speed reg lator electronic	Speed reg lator micro processor	Speed controller electronic
RDA 31-	ESH	ESM	ETO	ETH	EPH	EPA	EPA	EPA
5675-6D*	21-0075-35	01-0040-8D	-	-	-	-	-	-
5675-8D•	21-0030-35	01-0040-8D	10-0040-8D	36-0040-8D	-	-	-	83-0050-8D
5675-KD	21-0075-65	-	-	-	-	-	-	-
5675-HD	21-0075-65	-	-	-	-	-	-	-

RDA 31-5675

RDA genovent



RDA 31-

RDA 31- genovent

Gebhardt ytterrotormotor med monterat radialfläkthjäl.

Tillbehör / Index

- ② L tning pp till 45° i steg om 5° är möjlig

RDA 31- genovent

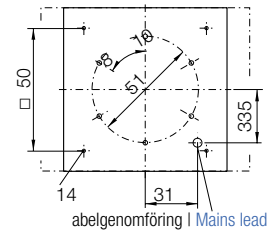
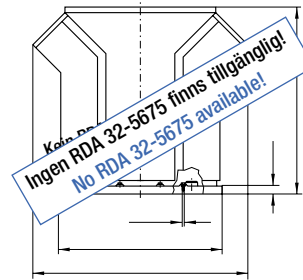
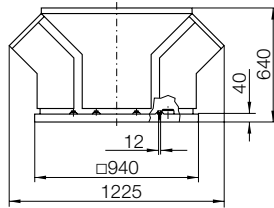
Gebhardt external rotor motor with impeller fitted directly.

Accessories / Index

- ② inclination in 5° steps p to 45° possible

Mått i mm, vi förbehåller oss rätten till ändringar.
RDA 31-5675-..

Dimensions in mm, Subject to change.



Tillbehör

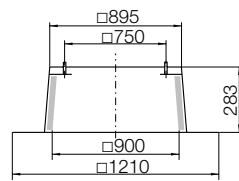
ZBS 01-0090 [Al] 13 kg

ZBS 20-0090 [St] 25 kg

Stos för platta tak

Flat roof

pstand

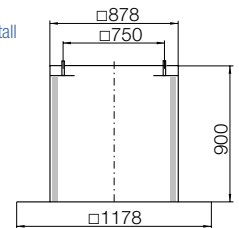


ZBS 23-0090 [St] 32 kg

Stos för platta tak, hög

Flat roof

pstand tall

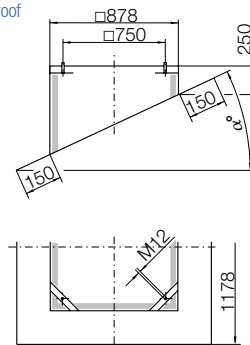


ZBS 09-0090-② [Al] 13 kg

Stos för snedtak

Inclined roof

pstand

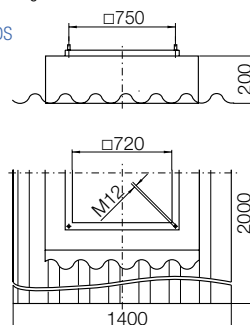


ZBS 11-0090 [GF] 4 kg

Stos för korr gerat tak

Soaker

sheet WDS



Accessories

ZDS 01-0090 [Al] 76 kg

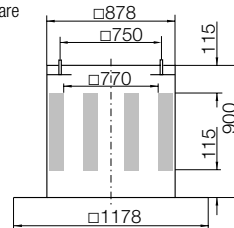
ZDS 20-0090 [St] 105 kg

Stoslj ddämpare

Upstand

silencer

①



ZDS 09-0090-② [Al] 76 kg

Stoslj ddämpare

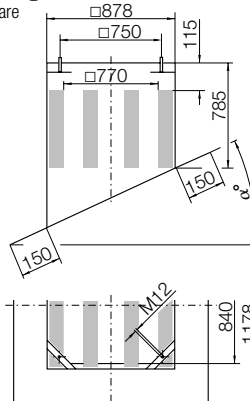
för snedtak

Inclined roof

pstand

silencer

①

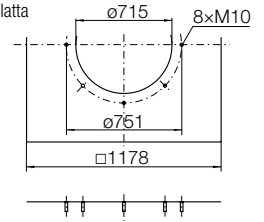


ZBU 01-0090-71 [St]

Ansl tningsplatta

Connection

plate

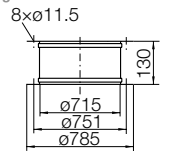


ZKE 11-0710 5 kg

D kstos, inlopp

Inlet connection

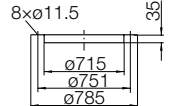
(flexible)



ZKF 11-0710 2.5 kg

Motfläns, inlopp

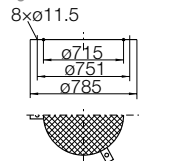
Mating flange



ZSG 04-0710 1.1 kg

Inloppsgaller

Mesh inlet g ard



G-560 [St]

Takgenomföring

inkl. stosram

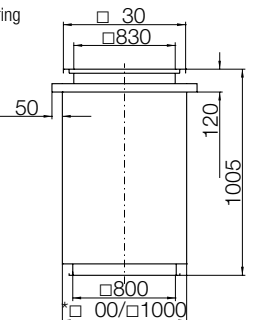
*EI30/EI60

Roof d ct

with

frame

*EI30/EI60

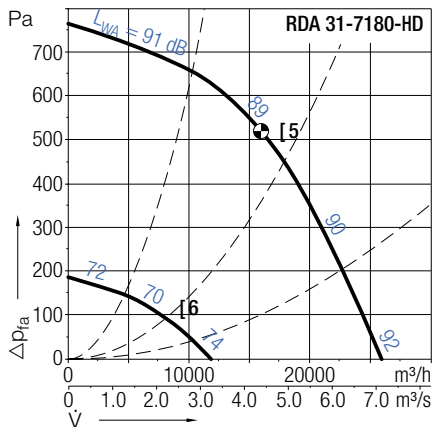
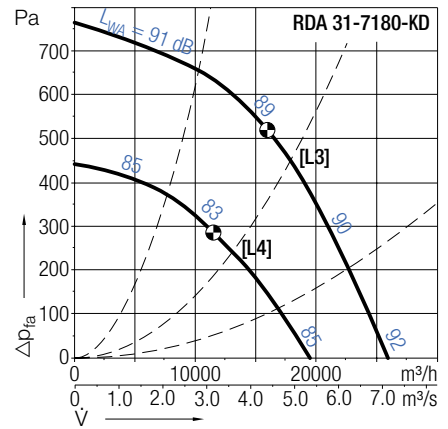
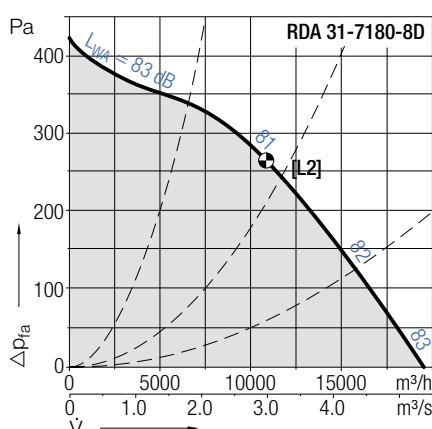
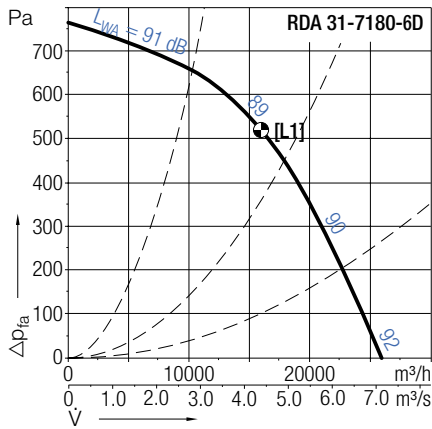


RDA 31-/32-7180

RDA <i>genovent</i>		Tekniska data (V_{max} / L_{WAB} giltig för RDA 31)							Technical Data (V_{max} / L_{WAB} valid to RDA 31)					
r- vor	Pol- tal	Spänning/ ansl tning	Fre- q ency	Varvtal	Max. effekt- förbr kning	Märk- ström	Startström/ Märkström	V_{max}	L_{WAB} vid V_{max}	onden- sator	Skyddsklass/ Isolationskl.	Vikt 31/32	Media- temp.	
C rves	Poles	Voltage/ Connection	Fre- q ency	Speed	Max. power cons mption	Nominal c rrent	Starting/F ll load c rrent	V_{max}	L_{WAB} at V_{max}	Capa- citor	Protection/ Temp. class	Weight 31/32	Media temp.	
RDA 31-/32-	V	Hz	v/min	kW	A			m^3/h	dB	μF		kg	$^{\circ}C$	
7180-6D* [L1]	6	400, 3~ Δ	50	945	5.2	10.2	6.2	25800	92	-	IP54/F	245/350	-20...+55	
7180-8D• [L2]	8	400, 3~ Δ	50	660	2.0	4.4	3.1	19150	83	-	IP54/F	250/340	-20...+40	
7180-KD [L3/L4]	6/8	400, 3~ Y/Y	50	960/715	5.5/2.5	11.3/5.2	5.6/5.2	25800/19400	92/85	-	IP54/F	252/335	-20...+50	
7180-HD [L5/L6]	6/12	400, 3~ Y/Y	50	960/480	5.5/0.85	11.0/3.3	4.5/3.0	25800/11400	92/74	-	IP54/F	245/350	-20...+55	

- (även) steglöst varvtalsreglerbar med spänning, * dessa typer går **inte** att varvtalsreglera med spänning I
- (also) **stepless** speed controllabale by tension variation, * these types do **not** have variable speed control by tension variation

RDA *genovent* Kurvor Curves $\rho_1=1.15 \text{ kg/m}^3$



RDA <i>genovent</i>	Tillbehör				Accessories			
Arbets- brytare	Motorskydds- brytare	Transformator 7-stegs	Transformator 5-stegs	Vridtyristor	Varvtalsregl. elektronisk	Varvtalsregl. mikroprocessor	Varvtalsregl. elektronisk	
Isolator	Motor protection nit	Transformer 7 taps	Transformer 5-steps	Speed reg lator electronic	Speed reg lator electronic	Speed reg lator micro processor	Speed controller electronic	
RDA 31-/32-ESH	ESM	ETO	ETH	EPH	EPA	EPA	EPA	
7180-6D*	21-0075-35	-	-	-	-	-	-	-
7180-8D•	21-0030-35	01-0040-8D	10-0065-8D	36-0070-8D	-	-	-	83-0050-8D
7180-KD	21-0075-65	-	-	-	-	-	-	-
7180-HD	21-0075-65	-	-	-	-	-	-	-

RDA 31-/32-7180

RDA *genovent*



RDA 31-



RDA 32-

Lj dämpat tförande
Noise atten ated version

RDA 31- *genovent*

Gebhardt ytterrotormotor med monterat radialfläktkj l.

RDA 32- *genovent*

Extra lj dabsorberande beklädnad för red cering av lj d-effektnivån med ca 7 dB(A) på avl ftsidan. Flödet red ceras vid samma tryckökning med 5-10 % jämfört med typ RDA 31.

Tillbehör / Index

② L trning pp till 45° i steg om 5° är möjlig

RDA 31- *genovent*

Gebhardt external rotor motor with impeller fitted directly.

RDA 32- *genovent*

Additionally eq ipped with so nd absorbing lining for A- so nd power level red ction of abo t 7 dB at discharge. The flow rate to RDA 31 will be red ced of 5-10 % at same press re rise.

Accessories / Index

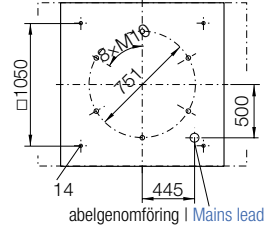
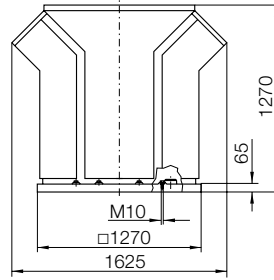
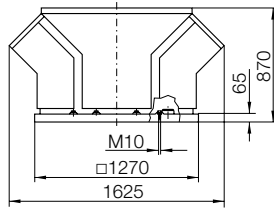
② inclination in 5° steps p to 45° possible

Mått i mm, vi förbehåller oss rätten till ändringar.

Dimensions in mm, Subject to change.

RDA 31-7180-..

RDA 32-7180-..



Tillbehör

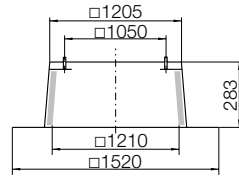
ZBS 01-0125 [Al] 17 kg

ZBS 20-0125 [St] 34 kg

Stos för platta tak

Flat roof

pstand

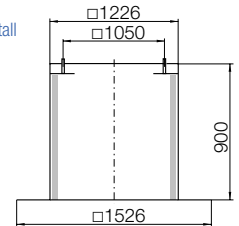


ZBS 23-0125 [St] 40 kg

Stos för platta tak, hög

Flat roof

pstand tall

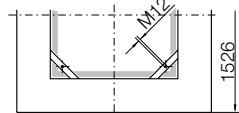
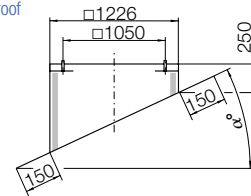


ZBS 09-0125-② [Al] 18 kg

Stos för snedtak

Inclined roof

pstand



Accessories

ZDS 01-0125 [Al] 130 kg

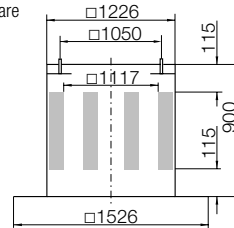
ZDS 20-0125 [St] 180 kg

Stoslj ddämpare

Upstand

silencer

①



ZDS 09-0125-② [Al] 130 kg

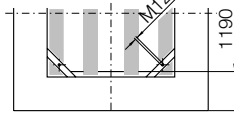
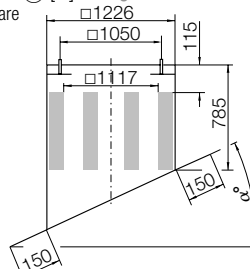
Stoslj ddämpare för snedtak

Inclined roof

pstand

silencer

①



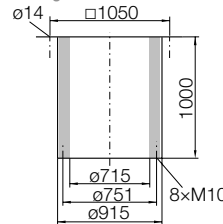
ZDR 30-0710 75 kg

Lj ddämpare

inloppssida

Inlet

silencer

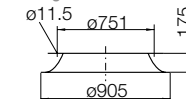


ZKD 01-0710 10 kg

Inloppskona med fläns

Flanged

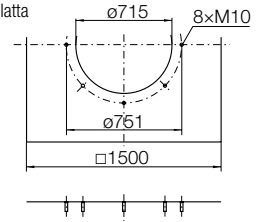
inlet cone



ZBU 01-0125-71 [St] 36 kg

Ansl trningsplatta

Connection

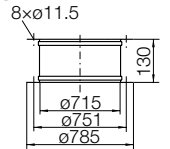


ZKE 11-0710 5 kg

D kstos, inlopp

Inlet connection

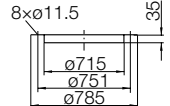
(flexible)



ZKF 11-0710 2.5 kg

Motfläns, inlopp

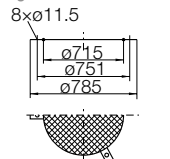
Mating flange



ZSG 04-0710 1.1 kg

Inloppsgaller

Mesh inlet g ard



G-710 [St]

Takgenomföring

inkl. stosram

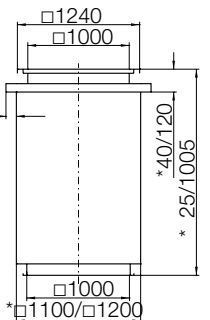
*EI30/EI60

Roof d ct

with

frame

*EI30/EI60

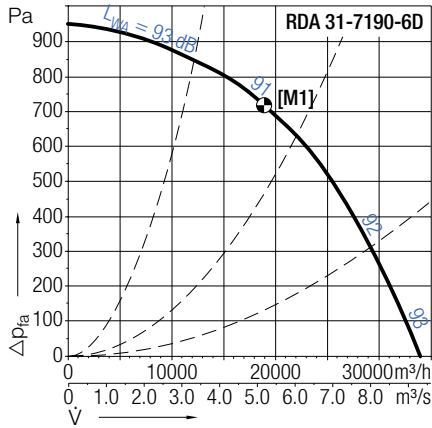


RDA 31-/32-7190

RDA <i>genovent</i>		Tekniska data (V_{max} / L_{WAB} giltig för RDA 31)						Technical Data (V_{max} / L_{WAB} valid to RDA 31)					
r- vor	Pol- tal	Spänning/ ansl tning	Frek- vens	Varvtal	Max. effekt- förbr kning	Märk- ström	Startström/ Märkström	V_{max}	L_{WAB} vid V_{max}	onden- sator	Skyddsklass/ Isolationskl.	Vikt 31/32	Media- temp.
C rves	Poles	Voltage/ Connection	Fre- q ency	Speed	Max. power cons mption	Nominal c rrent	Starting/F ll load c rrent	V_{max}	L_{WAB} at V_{max}	Capa- citor	Protection/ Temp. class	Weight 31/32	Media temp.
RDA 31-/32-		V	Hz	v/min	kW	A		m ³ /h	dB	µF		kg	°C
7190-6D* [M1]	6	400, 3~ Δ	50	940	8.5	16.0	6.3	34200	93	-	IP54/F	255/390	-20...+40

* dessa typer går inte att varvtalsreglera med spänning | * these types do not have variable speed control by tension variation

RDA <i>genovent</i>	Kurvor	Curves	$\rho_1=1.15 \text{ kg/m}^3$
---------------------	--------	--------	------------------------------



RDA <i>genovent</i>	Tillbehör				Accessories			
	Arbets- brytare	Motorskydds- brytare	Transformator 7-stegs	Transformator 5-stegs	Vridtyristor	Varvtalsregl. elektronisk	Varvtalsregl. mikroprocessor	Varvtalsregl. elektronisk
	Isolator	Motor protection nit	Transformer 7 taps	Transformer 5-steps	Speed reg lator electronic	Speed reg lator electronic	Speed reg lator micro processor	Speed controller electronic
RDA 31-/32-ESH		ESM	ETO	ETH	EPH	EPA	EPA	EPA
7190-6D*	21-0075-35	-	-	-	-	-	-	-

RDA 31-/32-7190

RDA *genovent*



RDA 31-



RDA 32-

Lj dämpat tförande
Noise atten ated version

RDA 31- *genovent*

Gebhardt ytterrotormotor med monterat radialfläktkj l.

RDA 32- *genovent*

Extra lj dabsorberande beklädnad för red cering av lj d-effektnivån med ca 7 dB(A) på avl ftsidan. Flödet red ceras vid samma tryckökning med 5-10 % jämfört med typ RDA 31.

Tillbehör / Index

② L trning pp till 45° i steg om 5° är möjlig

RDA 31- *genovent*

Gebhardt external rotor motor with impeller fitted directly.

RDA 32- *genovent*

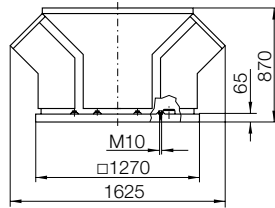
Additionally eq ipped with so nd absorbing lining for A- so nd power level red ction of abo t 7 dB at discharge. The flow rate to RDA 31 will be red ced of 5-10 % at same press re rise.

Accessories / Index

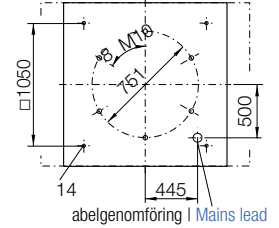
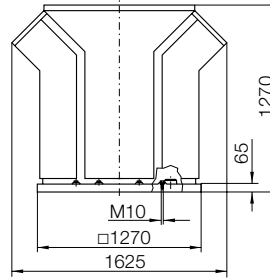
② inclination in 5° steps p to 45° possible

Mått i mm, vi förbehåller oss rätten till ändringar.

RDA 31-7190-..



RDA 32-7190-..



Tillbehör

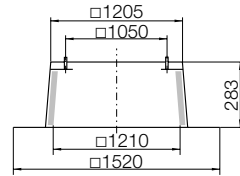
ZBS 01-0125 [Al] 17 kg

ZBS 20-0125 [St] 34 kg

Stos för platta tak

Flat roof

pstand

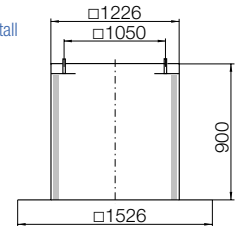


ZBS 23-0125 [St] 40 kg

Stos för platta tak, hög

Flat roof

pstand tall

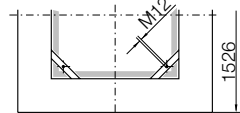
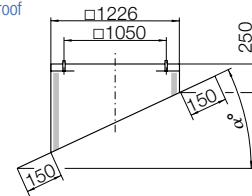


ZBS 09-0125-② [Al] 18 kg

Stos för snedtak

Inclined roof

pstand



Dimensions in mm, Subject to change.

Accessories

ZDS 01-0125 [Al] 130 kg

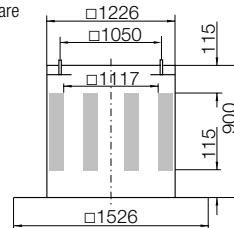
ZDS 20-0125 [St] 180 kg

Stoslj dämpare

Upstand

silencer

①



ZDS 09-0125-② [Al] 130 kg

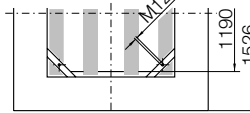
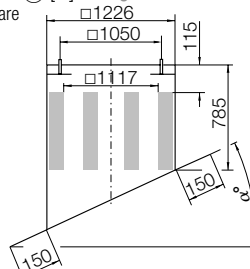
Stoslj dämpare för snedtak

Inclined roof

pstand

silencer

①



ZBU 01-0125-71 [St] 36 kg

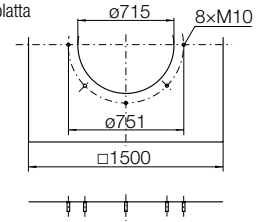
Ansl trningsplatta

Connection

plate

abelgenomföring | Mains lead

①



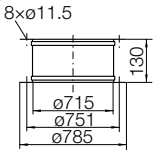
ZKE 11-0710 5 kg

D kstos, inlopp

Inlet connection

(flexible)

①

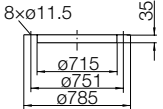


ZKF 11-0710 2.5 kg

Motfläns, inlopp

Mating flange

①

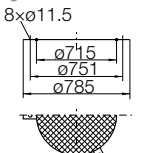


ZSG 04-0710 1.1 kg

Inloppsgaller

Mesh inlet g ard

①



ZDR 30-0710 75 kg

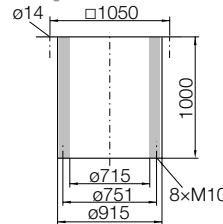
Lj dämpare

inloppssida

Inlet

silencer

①



ZKD 01-0710 10 kg

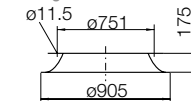
Inloppskona

med fläns

Flanged

inlet cone

①



G-710 [St]

Takgenomföring

inkl. stosram

*EI30/EI60

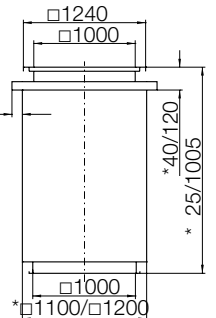
Roof d ct

with

frame

*EI30/EI60

①



RDA 21-1819/-2225

RDA 21-



RDA 21-1819/-2225

Beskrivning

Gebhardt takfläkt

med turbulensfritt, horisontellt riktat utlopp, lämplig för mediatemperaturer upp till ca +40 °C.

Estetiskt formgivnen kåpa och grundram med inloppskona av förzinkad stålplåt.

Inloppssida med möjlighet för flänsanslutning enligt DIN 24 155-2.

Utblåsöppningar täckta med ett strömningsoptimerat väderskyddsgaller.

Radialfläkthjul med bakåtböjda skovlar, monterat på rotorn till en ytterrotormotor, skyddsklass IP 44, med steg-löst reglerbart varvtal. Fläkthjulet är statiskt och dynamiskt balanserat enligt DIN ISO 1940. Motorn skyddas helt tack vare inbyggda termokontakter i serie med lindningen.

Vibrationsfritt monterat och helt underhållsfritt.

Varianter (option)

- standard, varvtalsreglering genom spänningsreglering (1~)
- varvtalsreglerbar, EC-motor med kommuteringsenhet (1~)

Specifications

Gebhardt Radial-Roof-Fan

with swirl free horizontally directed discharge, for maximum gas medium temperatures app. +40 °C.

Stylish casing and base frame with inlet cone, manufactured from galvanised sheet steel.

Inlet flange in accordance with DIN 24 155 - 2.

Discharge outlets protected from the weather with an aerodynamically shaped grill.

Centrifugal impeller with backwards curved blades, mounted on the rotor of a variable speed integral external rotor motor, protected to IP 44, statically and dynamically balanced in accordance with DIN ISO 1940.

Motor protection is through direct switching thermal contacts in the motor winding, supplied ready to connect.

Dynamically balanced, installed vibration free, totally maintenance free.

Options (at choice)

- standard, speed controllable by tension variation (1~)
- speed controllable, EC-motor with commutation unit (1~)

Fläkttyp	genovent	RDA 21-
Flöde	\dot{V} =	m ³ /h
Tryckökning	Δp_{fa} =	Pa
Mediatemperatur	t =	°C
Varvtal	n =	v/min
Max. effektförbrukning	P_e =	kW
Märkström	I =	A
Spänning/Frekvens	U/f =	V/Hz
Ljudeffektnivå, A-vägd	L_{WA8} =	dB
Vikt	m =	kg

Fan type	genovent	RDA 21-
Volume	\dot{V} =	m ³ /h
Pressure increase	Δp_{fa} =	Pa
Media temperature	t =	°C
Speed	n =	1/min
Max. power consumption	P_e =	kW
Nominal current	I =	A
Voltage/Frequency	U/f =	V/Hz
Sound power level	L_{WA8} =	dB
Weight	m =	kg

Specialutrustning (mot pristillägg)

Monterad arbetsbrytare (ESH 21)

Speciallackering

Tillbehör (mot pristillägg)

Takgenomföring EI30/EI60, med (fällbar) stosram

Fällbar stosram, måttanpassad för befintlig takgenomföring

Stos för platta tak – al mini m (ZBS 01) | förz. stålplåt (ZBS 20)

Stos för platta tak, hög - förz. stålplåt (ZBS 23)

Stos för snedtak – al mini m (ZBS 09)

Stos för korrigerat tak - glasfiberförst. polyester (ZBS 11)

Stosljuddämpare – al mini m (ZDS 01) | förz. stålplåt (ZDS 20)

Stosljuddämpare för snedtak – al mini m (ZDS 09)

Inloppskona med fläns (Z D 01)

Anslutningsplatta (ZBU 01)

Dörrkåpa, inlopp (Z E 11/13)

Motfläns, inlopp (Z F 11/13)

Självstängande backspjäll (ZL 01/03)

Inloppsgaller (ZSG 04)

Brytare / Varvtalsregulator / Regulator

ombineringsmöjligheter, se Tekniska data

Beskrivning, se tillbehör

Opplösningsscheman, se online under www.gebhardt.se

Special fittings (at extra cost)

Isolator monterad (ESH 21)

Special coating

Accessories (at extra cost)

Roof Duct, EI30 or EI60, with foldable frame

Foldable Frame, custom made for existing Roof Duct

Flat roof pstand – Al mini m (ZBS 01) | galvanised sheet steel (ZBS 20)

Flat roof pstand tall – galvanised sheet steel (ZBS 23)

Inclined roof pstand – Al mini m (ZBS 09)

Soaker sheet WDS – GF (ZBS 11)

Upstand silencer – Al mini m (ZDS 01) | galvanised sheet steel (ZDS 20)

Inclined roof pstand silencer – Al mini m (ZDS 09)

Flanged inlet cone (Z D 01)

Connection plate (ZBU 01)

Inlet connection - flexible (Z E 11/13)

Mating flange (Z F 11/13)

Automatic shutter (ZL 01/03)

Mesh inlet guard (ZSG 04)

Switches / Regulators / Controllers

Assignment see technical data

Specification see Accessories

Wiring diagrams see online at www.gebhardt.de

RDA 31-/32-2528/-7190

RDA 31-/32-



RDA 31-2528/-7190



RDA 32-2528/-7190

Lj ddämpat tförande
Noise atten ated version

Beskrivning

Gebhardt takfläkt

med turbulensfri uppåtriktad luftström, lämplig för medietemperaturer upp till ca +40 °C. Sluten, estetiskt utformad kåpa i korrosionsbeständig aluminium.

Grundram i förzinkad stålplåt för stosmontage, med brett överhäng för stosisolering. Inloppssida med möjlighet för flänsanslutning enligt DIN 24 155-2.

Utblåsöppningar täckta med självöppnande och självstängande backspjäll som väderskydd när fläkten står stilla.

Kåpans delar och fläkthjul med motor är lätta att lossa vid inspektion och underhåll.

Radialfläkthjul med bakåtböjda skovlar, monterat på rotorn till en ytterrotormotor, statiskt och dynamiskt balanserat enligt DIN ISO 1940. Helt underhållsfri, vibrationsfritt monterad motor med anslutningsfärdig kopplingsdosa. Inbyggda termokontakter för komplett motorskydd.

Varianter (option)

- standard, RDA 31
- kåpa med lj dabsorberande beklädnad för red cering av lj d-effektnivån med 7 dB(A) på avl ftssidan, RDA 32
- ett varvtal (1~ eller 3~)
- två varvtal (3~)
- varvtalsreglering genom spänningsreglering (1~ eller 3~)
- varvtalsreglerbar, EC-motor med komm teringsenhet (1~), endast RDA 31

Fläkttyp	genovent	RDA
Flöde	$\dot{V} =$	m ³ /h
Tryckökning	$\Delta p_{fa} =$	Pa
Medietemperatur	$t =$	°C
Varvtal	$n =$	v/min
Max. effektförbrukning	$P_e =$	kW
Märkström	$I =$	A
Spänning/Frekvens	$U/f =$	V/Hz
Ljudeffektnivå, A-vägd	$L_{WA8} =$	dB
Vikt	$m =$	kg

Specialutrustning (mot pristillägg)

Monterad arbetsbrytare (ESH 21)
Ställdon för backspjäll på avl ftssidan (ILA)
Speciallackering

Tillbehör (mot pristillägg)

Takgenomföring EI30/EI60, med (fällbar) stosram
Fällbar stosram, måttanpassad för befintlig takgenomföring
Stos för platta tak – al mini m (ZBS 01) | förz. stålplåt (ZBS 20)
Stos för platta tak, hög - förz. stålplåt (ZBS 23)
Stos för snedtak – al mini m (ZBS 09)
Stos för korr gerat tak - glasfiberförst. polyester (ZBS 11) pp till typ 5671
Stoslj ddämpare – al mini m (ZDS 01) | förz. stålplåt (ZDS 20)
Stoslj ddämpare för snedtak – al mini m (ZDS 09)
Lj ddämpare f. inloppssida (ZDR 30)
Inloppskona med fläns (Z D 01)
Ansl tningsplatta (ZBU 01)
D kstos, inlopp (Z E 11)
Motfläns, inlopp (Z F 11)
Inloppsgaller (ZSG 04)
Flödesmät ttag

Brytare / Ställdon / Reglerenheter

ombineringsmöjligheter, se Tekniska data
Beskrivning, se tillbehör
opplingsscheman, se online nder www.gebhardt.se

Specifications

Gebhardt Radial-Roof-Fan

with swirl free vertically directed discharge, for maximum gas medium temperatures app. +40 °C.

Stylish sealed casing manufactured from aluminium. Base frame of galvanised sheet steel for fitting to upstand, projecting well beyond the upstand in order to increase weatherproofing.

Inlet flange in accordance with DIN 24 155 - 2.

Discharge outlets are protected from the weather on fan shutdown by automatic backdraught shutters.

Casing parts, and the impeller plus motor, are easily removed for inspection and maintenance.

High performance centrifugal impeller with backward curved blades, mounted on the rotor of a external rotor motor, statically and dynamically balanced in accordance with DIN ISO 1940, totally maintenance free, installed

vibration free, with terminal box fitted ready to connect. Built in thermal contacts for motor protection.

Options (at choice)

- Standard, RDA 31
- casing with so nd absorbing lining for A-so nd power level red ction of abo t 7 dB at discharge, RDA 32
- single speed (1~ or 3~)
- do ble speed (3~)
- speed controllable by tension variation (1~ or 3~)
- speed controllable, EC-motor with comm tation nit (1~), only RDA 31

Fan type	genovent	RDA
Volume	$\dot{V} =$	m ³ /h
Pressure increase	$\Delta p_{fa} =$	Pa
Media temperature	$t =$	°C
Speed	$n =$	1/min
Max. power consumption	$P_e =$	kW
Nominal current	$I =$	A
Voltage/Frequency	$U/f =$	V/Hz
Sound power level	$L_{WA8} =$	dB
Weight	$m =$	kg

Special fittings (at extra cost)

Isolator mo nted (ESH 21)
Act ator for back dra ght dampers (ILA)
Special coating

Accessories (at extra cost)

Roof D ct, EI30 or EI60, with foldable frame
Foldable Frame, c stom made for existing Roof D ct
Flat roof pstand – Al mini m (ZBS 01) | galvanised sheet steel (ZBS 20)
Flat roof pstand tall – galvanised sheet steel (ZBS 23)
Inclined roof pstand – Al mini m (ZBS 09)
Soaker sheet WDS – GF (ZBS 11) p to size 5671
Upstand silencer – Al mini m (ZDS 01) | galvanised sheet steel (ZDS 20)
Inclined roof pstand silencer – Al mini m (ZDS 09)
Inlet silencer (ZDR 30)
Flanged inlet cone (Z D 01)
Connection plate (ZBU 01)
Inlet connection - flexible (Z E 11)
Mating flange (Z F 11)
Mesh inlet g ard (ZSG 04)
Vol meter

Switches / Regulators / Controllers

Assignment see technical data
Specification see Accessories
Wiring diagrams see online at www.gebhardt.de

RDA 21-1819/-2225

RDA 31-2528/-7190

RDA <i>genovent</i>	Bestämning av oktavnivån	Determination of the Octave level
	För noggrannare beräkningar för bestämning av ljud-dämpande åtgärder är ljudeffektnivån i oktavbanden av betydelse. $L_{Wokt3} = L_{WA} + L_{Wrel3}$ Den relativa ljudeffektnivån för inlopps- och avluftssida vid olika arbetspunkter framgår av respektive tabell.	For more exact calculations when determining the required attenuation, the sound power level in the octave bands is important. $L_{Wokt3} = L_{WA} + L_{Wrel3}$ The relative sound power levels for inlet and discharge sides, at various duty points, can be read from the corresponding tables.

RDA		Inloppssida		Inlet side										
Inloppssida		Relativ ljudeffektnivå för inloppssida L_{Wrel3} vid oktavmedelfrekvenserna f_m [$L_{Wrel3} = L_{Wokt3} - L_{WA3}$]												
Inlet side		Relative sound power level for inlet side L_{Wrel3} at octave centre frequencies f_m [$L_{Wrel3} = L_{Wokt3} - L_{WA3}$]												
RDA 21-	Polital Poles	Arbetsp nkt Operation Point	63	125	250	500	1000	2000	4000	8000	Hz			
1819/-2225	2	0.5 \dot{V}_{opt}	10	9	4	-4	-8	-15	-18	-25	dB			
		\dot{V}_{opt}	8	7	2	-3	-6	-12	-15	-23	dB			
		\dot{V}_{max}	3	0	-1	-3	-6	-9	-10	-15	dB			
1819/-2225	4	0.5 \dot{V}_{opt}	15	11	3	-4	-10	-16	-19	-27	dB			
		\dot{V}_{opt}	11	8	3	-4	-7	-12	-16	-24	dB			
		\dot{V}_{max}	2	3	1	-5	-7	-8	-8	-25	dB			
DA 31-	Polital Poles	Arbetsp nkt Operation Point	63	125	250	500	1000	2000	4000	8000	Hz			
			2528/-2531	2	0.5 \dot{V}_{opt}	16	12	3	-4	-13	-17	-20	-27	dB
					\dot{V}_{opt}	1	1	6	-3	-12	-14	-15	-23	dB
\dot{V}_{max}	-2	-4			5	-3	-12	-16	-15	-19	dB			
2528/-2531	4	0.5 \dot{V}_{opt}	13	12	2	-2	-10	-14	-19	-27	dB			
		\dot{V}_{opt}	8	12	1	-3	-10	-13	-18	-26	dB			
		\dot{V}_{max}	4	10	1	-2	-9	-13	-15	-23	dB			
2528/-2531	6	0.5 \dot{V}_{opt}	12	12	2	-2	-9	-16	-22	-31	dB			
		\dot{V}_{opt}	8	12	0	-4	-11	-17	-22	-35	dB			
		\dot{V}_{max}	8	14	4	-1	-9	-13	-13	-34	dB			
3535/-3545	4	0.5 \dot{V}_{opt}	13	11	1	-2	-11	-16	-21	-27	dB			
		\dot{V}_{opt}	9	11	1	-2	-11	-15	-20	-24	dB			
		\dot{V}_{max}	6	9	2	-1	-11	-16	-19	-21	dB			
3535/-3545	6	0.5 \dot{V}_{opt}	16	10	1	-1	-10	-16	-22	-27	dB			
		\dot{V}_{opt}	14	11	1	-2	-11	-16	-22	-30	dB			
		\dot{V}_{max}	11	13	3	-1	-12	-17	-21	-29	dB			
4550/-4556	4	0.5 \dot{V}_{opt}	14	10	1	-2	-10	-14	-15	-22	dB			
		\dot{V}_{opt}	9	12	0	-3	-10	-15	-15	-21	dB			
		\dot{V}_{max}	3	9	1	-2	-12	-16	-16	-12	dB			
4550/-4556	6	0.5 \dot{V}_{opt}	15	11	1	-2	-11	-15	-16	-23	dB			
		\dot{V}_{opt}	11	13	-1	-4	-12	-16	-17	-25	dB			
		\dot{V}_{max}	7	15	3	-1	-10	-14	-12	-21	dB			
4550/-4556	8	0.5 \dot{V}_{opt}	19	4	1	-2	-8	-14	-18	-25	dB			
		\dot{V}_{opt}	20	4	0	-3	-7	-14	-17	-26	dB			
		\dot{V}_{max}	19	4	2	-3	-11	-16	-13	-27	dB			
5663/-5675	4	0.5 \dot{V}_{opt}	10	9	3	-4	-8	-14	-16	-23	dB			
		\dot{V}_{opt}	5	9	1	-6	-8	-13	-12	-17	dB			
		\dot{V}_{max}	-3	5	-2	-3	-6	-10	-11	-12	dB			
5663/-5675	6	0.5 \dot{V}_{opt}	14	11	1	-2	-8	-14	-16	-23	dB			
		\dot{V}_{opt}	13	11	-1	-4	-10	-15	-16	-22	dB			
		\dot{V}_{max}	11	11	0	-2	-9	-13	-10	-15	dB			
5663/-5675	8	0.5 \dot{V}_{opt}	15	5	1	-1	-8	-13	-16	-23	dB			
		\dot{V}_{opt}	15	3	0	-2	-7	-11	-14	-22	dB			
		\dot{V}_{max}	15	3	1	-3	-9	-13	-11	-23	dB			
7180/-7190	6	0.5 \dot{V}_{opt}	14	11	1	-2	-10	-14	-16	-23	dB			
		\dot{V}_{opt}	11	13	-1	-4	-11	-15	-17	-23	dB			
		\dot{V}_{max}	7	13	2	-1	-9	-13	-11	-18	dB			
7180/-7190	8	0.5 \dot{V}_{opt}	15	5	1	-2	-8	-14	-16	-23	dB			
		\dot{V}_{opt}	15	3	0	-2	-7	-12	-15	-24	dB			
		\dot{V}_{max}	14	3	1	-3	-9	-14	-12	-25	dB			
7180/-7190	12	0.5 \dot{V}_{opt}	15	4	0	-2	-7	-13	-17	-24	dB			
		\dot{V}_{opt}	17	3	0	-2	-6	-12	-18	-24	dB			
		\dot{V}_{max}	18	6	1	-2	-9	-13	-15	-28	dB			

$$L_{WA} = L_{WA8} = L_{WA3}$$

Ljudeffektnivåerna i oktavbanden kan vid enstaka tillfällen nå något högre värden i frekvensområdet för fläktbladens periferitoner än de som finns angivna i tabellen.

The sound power levels in the octave bands can – in the case of being situated at blade frequency – reach higher values as indicated in the table.

RDA 21-1819/-2225

RDA 31-2528/-7190

RDA genovent**Bestämning av oktavnivån**

För noggrannare beräkningar för bestämning av ljud-dämpande åtgärder är ljudeffektnivån i oktavbanden av betydelse.

$$L_{Wokt8} = L_{WA} + L_{Wrel8}$$

Den relativa ljudeffektnivån för inlopps- och avluftssida vid olika arbetspunkter framgår av respektive tabell.

Determination of the Octave level

For more exact calculations when determining the required attenuation, the sound power level in the octave bands is important.

$$L_{Wokt8} = L_{WA} + L_{Wrel8}$$

The relative sound power levels for inlet and discharge sides, at various duty points, can be read from the corresponding tables.

RDA		Avluftssida		Discharge side									
Avluftssida		Arbetsp nkt		Relativ ljud effektnivå för avl ftssida L_{Wrel8} vid oktavmedelfrekvenserna f_m [$L_{Wrel8} = L_{Wokt8} - L_{WA8}$]									
Discharge side		Operation Point		Relative sound power level for discharge side L_{Wrel8} at octave centre frequencies f_m [$L_{Wrel8} = L_{Wokt8} - L_{WA8}$]									
RDA 21-	Polital Poles	Arbetsp nkt Operation Point	63	125	250	500	1000	2000	4000	8000	Hz		
1819/-2225	2	0.5 \dot{V}_{opt}	-8	-6	0	-5	-6	-6	-11	-17	dB		
		\dot{V}_{opt}	-11	-10	-4	-7	-6	-5	-10	-16	dB		
		\dot{V}_{max}	-14	-16	-9	-8	-7	-5	-7	-14	dB		
1819/-2225	4	0.5 \dot{V}_{opt}	-3	-4	1	-4	-8	-6	-12	-14	dB		
		\dot{V}_{opt}	-6	-8	-2	-6	-8	-5	-10	-14	dB		
		\dot{V}_{max}	-15	-16	-7	-9	-10	-4	-8	-20	dB		
RDA 31-	Polital Poles	Arbetsp nkt Operation Point	63	125	250	500	1000	2000	4000	8000	Hz		
		2528/-2531	2	0.5 \dot{V}_{opt}	-5	0	0	-2	-5	-8	-12	-19	dB
				\dot{V}_{opt}	-8	-6	-1	-3	-6	-8	-9	-17	dB
\dot{V}_{max}	-9			-8	-3	-2	-6	-8	-8	-15	dB		
2528/-2531	4	0.5 \dot{V}_{opt}	-2	0	-1	-2	-5	-8	-13	-21	dB		
		\dot{V}_{opt}	-5	0	-2	-3	-5	-7	-12	-21	dB		
		\dot{V}_{max}	-10	-1	-4	-3	-5	-6	-12	-19	dB		
2528/-2531	6	0.5 \dot{V}_{opt}	-2	3	2	-2	-6	-11	-18	-28	dB		
		\dot{V}_{opt}	-4	4	2	-2	-6	-12	-18	-29	dB		
		\dot{V}_{max}	-6	2	3	-2	-5	-9	-8	-30	dB		
3535/-3545	4	0.5 \dot{V}_{opt}	-3	4	-1	-4	-5	-7	-12	-20	dB		
		\dot{V}_{opt}	-6	4	-1	-4	-5	-7	-12	-19	dB		
		\dot{V}_{max}	-10	4	-1	-3	-5	-7	-13	-17	dB		
3535/-3545	6	0.5 \dot{V}_{opt}	1	6	0	-3	-6	-9	-16	-25	dB		
		\dot{V}_{opt}	-1	6	0	-3	-6	-9	-15	-25	dB		
		\dot{V}_{max}	-1	6	1	-3	-5	-8	-13	-25	dB		
4550/-4556	4	0.5 \dot{V}_{opt}	1	5	0	-4	-5	-9	-12	-20	dB		
		\dot{V}_{opt}	-4	8	-1	-5	-6	-9	-12	-19	dB		
		\dot{V}_{max}	-8	8	-2	-4	-6	-9	-15	-12	dB		
4550/-4556	6	0.5 \dot{V}_{opt}	2	4	1	-4	-5	-7	-12	-22	dB		
		\dot{V}_{opt}	0	4	0	-4	-6	-8	-13	-22	dB		
		\dot{V}_{max}	-4	5	0	-3	-6	-8	-12	-22	dB		
4550/-4556	8	0.5 \dot{V}_{opt}	7	4	-1	-4	-4	-9	-15	-25	dB		
		\dot{V}_{opt}	7	3	-2	-4	-4	-8	-15	-25	dB		
		\dot{V}_{max}	7	3	-1	-5	-4	-9	-14	-24	dB		
5663/-5675	4	0.5 \dot{V}_{opt}	2	5	2	-3	-6	-9	-15	-20	dB		
		\dot{V}_{opt}	-3	5	0	-4	-6	-9	-11	-14	dB		
		\dot{V}_{max}	-10	2	-4	-4	-4	-8	-12	-15	dB		
5663/-5675	6	0.5 \dot{V}_{opt}	2	3	0	-3	-5	-8	-13	-21	dB		
		\dot{V}_{opt}	2	3	-1	-3	-5	-8	-12	-19	dB		
		\dot{V}_{max}	0	4	-1	-3	-6	-8	-11	-16	dB		
5663/-5675	8	0.5 \dot{V}_{opt}	4	1	0	-3	-5	-8	-15	-22	dB		
		\dot{V}_{opt}	4	0	-2	-3	-5	-7	-14	-23	dB		
		\dot{V}_{max}	3	2	0	-2	-8	-9	-8	-23	dB		
7180/-7190	6	0.5 \dot{V}_{opt}	2	4	1	-3	-5	-7	-13	-21	dB		
		\dot{V}_{opt}	1	3	0	-4	-5	-8	-12	-20	dB		
		\dot{V}_{max}	-3	4	0	-3	-6	-8	-11	-20	dB		
7180/-7190	8	0.5 \dot{V}_{opt}	2	1	0	-3	-6	-8	-15	-23	dB		
		\dot{V}_{opt}	3	0	-2	-3	-5	-8	-14	-23	dB		
		\dot{V}_{max}	3	2	0	-2	-6	-8	-10	-23	dB		
7180/-7190	12	0.5 \dot{V}_{opt}	6	3	-1	-3	-5	-8	-15	-26	dB		
		\dot{V}_{opt}	6	1	-1	-3	-5	-8	-15	-26	dB		
		\dot{V}_{max}	6	1	-1	-3	-5	-8	-15	-25	dB		

$$L_{WA} = L_{WA8} = L_{WA3}$$

Ljudeffektnivåerna i oktavbanden kan vid enstaka tillfällen nå något högre värden i frekvensområdet för fläktbladens periferitoner än de som finns angivna i tabellen.

The sound power levels in the octave bands can – in the case of being situated at blade frequency – reach higher values as indicated in the table.

RDA 32-2528/-7190

RDA 32



Ljudnivåreducering för utförande RDA 32

Med hjälp av RDA 32 reduceras ljudet mot omgivningen. För dessa typer har kåpans insida beklänts med ljudabsorberande material. Sänkningen av ljud-effektnivån på avluftssidan uppgår till 7 dB(A). Följande sänkning av medelnivån i oktavbanden kan förväntas:

Sound power level reduction at Type RDA 32

With the RDA 32 the noise generated is reduced. This fan range is equipped with sound absorbing lining for A-sound power level reduction of about 7 dB at discharge. In the octave-bands the average noise level reduction can be expected as follows:

Sänkning av oktavnivån för RDA 32

Sänkning av medeloktavnivån L_{W08} vid respektive mittfrekvens f_m

Octave level reduction RDA 32

Octave level reduction L_{W08} at octave centre frequencies f_m

63	125	250	500	1000	2000	4000	8000	Hz
-0.2	-0.5	-1.5	-8	-9.5	-12	-12	-13	dB

RDA 31-/32-2528/-7180

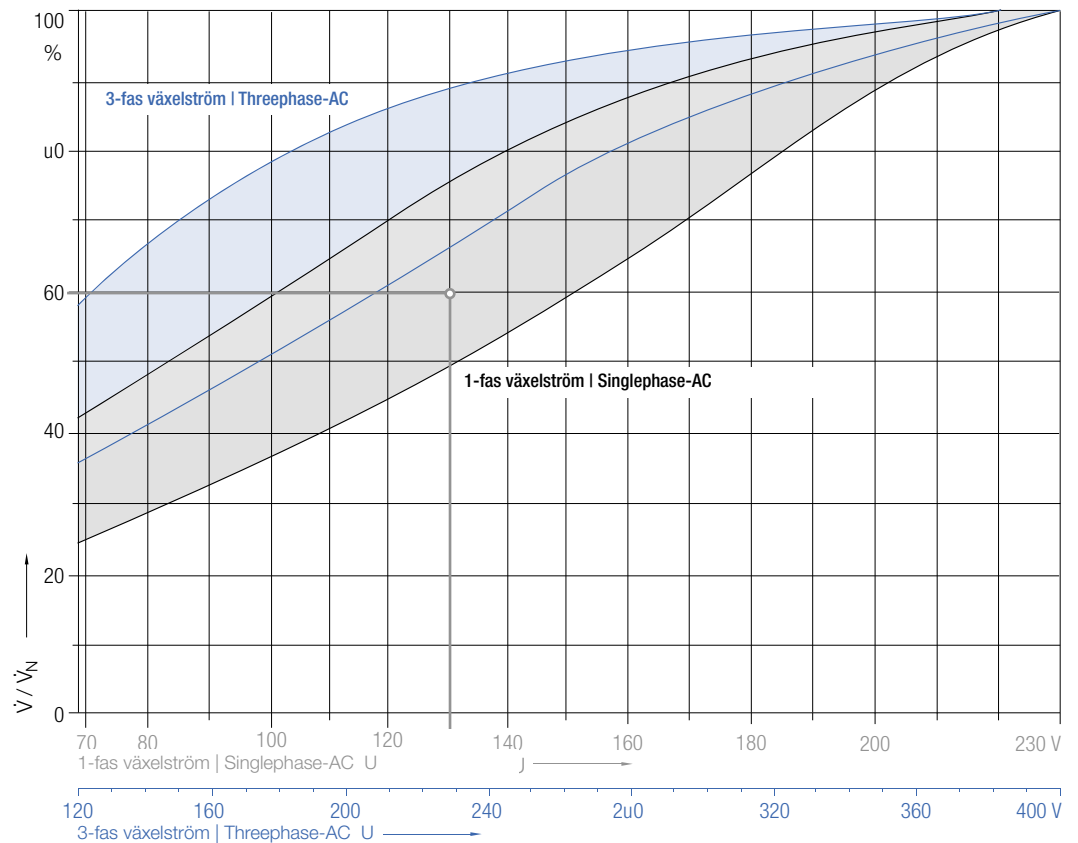
RDA *genovent*

Flöde vid spänningsreglering

Varvtalsreglerade fläktar

Flow rate in the case of low voltage

Speed controllable fans



Ur denna kurva bestäms flödet vid spänningsreglering. Det relativa flödet framställs i relation till spänningen på plinten.
Exempel för uppskattning av flödet vid spänningsreglering:

Fläkt	DA 31-4550-4E
Transformator, 5-steps	ETH 35-0070-5E
Sekundärspänning	130 Volt

I det med grått rasterade området för 1-fas växelströmsfläktar uppgår det relativa flödet till ca 60 % av det nominella värdet.

This diagramme is made for determining the flow rate in the case of low voltage.

The flow rate ratio is shown in function of the voltage at the tapings.

Example for evaluation of the flow rate at low voltage:

Fan	DA 31-4550-4E
Speed transformer, 5-step	ETH 35-0070-5E
Secondary voltage	130 Volt

In the grey area for a fan with single phase motor the result for the flow rate is 60 % of the rated value.

ZLH 30-0250/-0710

ZLH genovent



Beskrivning

Takhuv ZLH 30-0250/-0710

Estetiskt utformad kåpa av korrosionsbeständig aluminium.
 Grundram med aerodynamiskt utformad inloppskona i förzinkad stålplåt.
 Takhuvur tjänar som väderskydd för ventilationsöppningar i tak eller för kanalsystem från mekaniska ventilationsanläggningar som leds upp på tak.
 De lämpar sig för till- och frånluftssystem.
 Strömningsförluster som uppstår i en takhuv framgår av motsvarande diagram.

Description

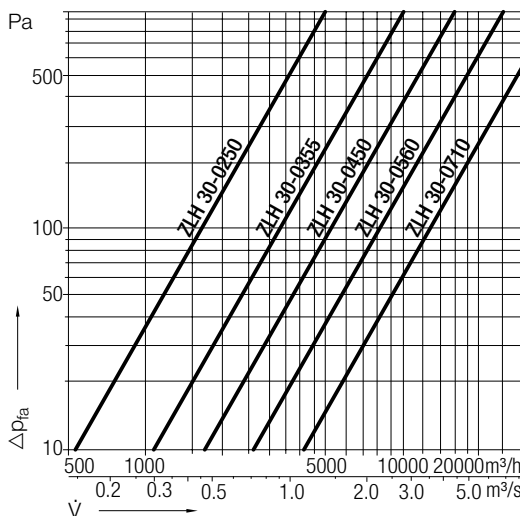
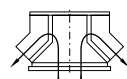
Roof Cowl ZLH 30-0250/-0710

Stylish casing manufactured from aluminium.
 Base frame of galvanised sheet steel, with aerodynamic inlet.
 Roof cowls are for weatherproofing, they protect ventilation apertures in the roof, or external ducting of mechanical ventilation systems.
 They are suitable for either intake or discharge applications.
 The flow losses that arise in the roof cowl are shown in their respective diagrams.

ZLH genovent

Kurvor

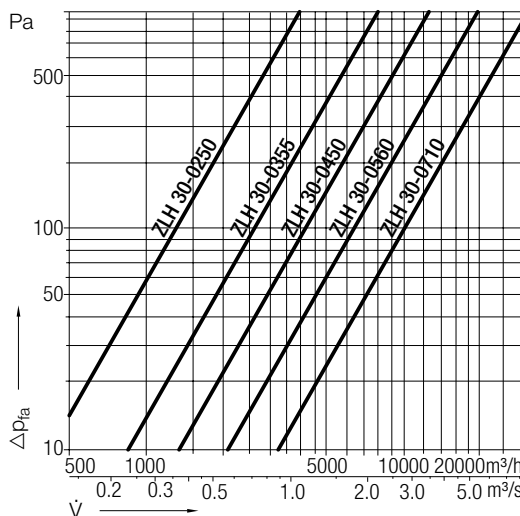
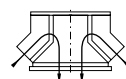
Tryckfall i takhuvur vid frånluft
 Pressure decrease in roof cowls – discharge mode



Curves

$\rho_1=1.15 \text{ kg/m}^3$

Tryckfall i takhuvur vid tilluft
 Pressure decrease in roof cowls – intake mode



ZLH genovent

Mått i mm, vi förbehåller oss rätten till ändringar.

Dimensions in mm, Subject to change.

ZLH 30-	A	B	□C	∅D	E	□F	H	K	Z	ikt Weight ca kg
0250	600	330	440	12	M6	330	32	286	6 × 60°	7
0355	770	405	600	12	M8	450	32	395	8 × 45°	10
0450	985	510	750	14	M8	590	32	487	6 × 60°	20
0560	1225	640	940	14	M10	750	40	605	8 × 45°	35
0710	1625	870	1270	14	M10	1050	65	751	8 × 45°	60

Mått i mm, vi förbehåller oss rätten till ändringar.

Dimensions in mm, Subject to change.

Tillbehör
 Accessories

	∅a	∅b	∅c	z×∅d	∅d4	e	e4	e14	k
0250	256	286	306	6×7	88	25	240	185	207
0355	361	395	421	8×9.5	88	30	240	237	258
0450	453	487	513	6×9.5	88	30	240	282	300
0560	569	605	639	8×11.5	88	35	240	343	360
0710	715	751	785	8×11.5	88	35	300	415	437

Tillbehör
 Accessories

	□a	∅a	□a1	□a2	□b	∅b	b1	□d	□d1	d2	d11	□d12	d21	f	z×f2	h	α
0040 (-25)	395	256	400	319	330	286	650	710	618	920	618	618	1600	M10	6×M6	150	②
0056 (-35)	555	361	560	420	450	395	800	870	778	920	778	778	1600	M10	8×M8	150	②
0071 (-45)	705	453	710	560	590	487	900	1020	988	1400	988	988	2000	M12	6×M8	150	②
0090 (-56)	895	569	900	720	750	605	900	1210	1178	1400	1178	1178	2000	M12	8×M10	150	②
0125 (-71)	1205	715	1210	–	1050	751	900	1520	1526	–	1526	1500	–	M12	8×M10	150	②

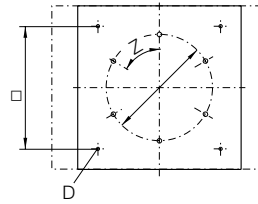
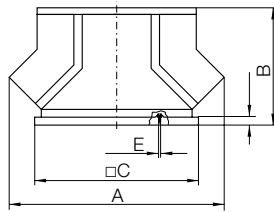
ZLH 30-0250/-0710

ZLH genovent



Mått i mm, vi förbehåller oss rätten till ändringar.
ZLH 30-0250/-0710

Dimensions in mm, Subject to change.



ZLH 30- genovent

Tillbehör / Index

- ② L tning pp till 45° i steg om 5° är möjlig

ZLH 30- genovent

Accessories / Index

- ② inclination in 5° steps p to 45° possible

Tillbehör

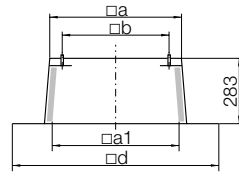
ZBS 01-0040/-0125 [A]

ZBS 20-0040/-0125 [St]

Stos för platta tak

Flat roof

pstand

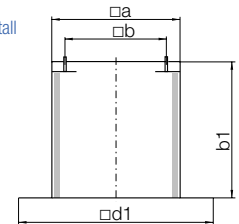


ZBS 23-0040/-0125 [St]

Stos för platta tak, hög

Flat roof

pstand tall

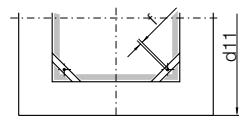
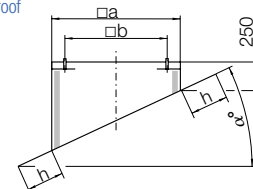


ZBS 09-0040/-0125-② [A]

Stos för snedtak

Inclined roof

pstand



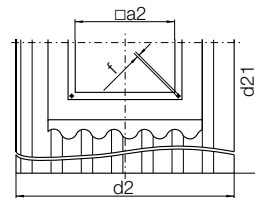
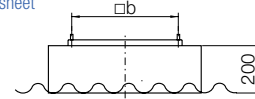
Accessories

ZBS 11-0040/-0090 [GF]

Stos för korr gerat tak

Soaker sheet

WDS

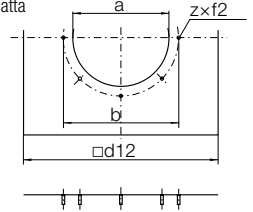


ZBU 01-0040/-0125-.. [St]

Ansl tningsplatta

Connection

plate

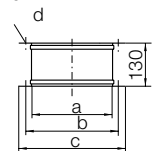


ZKE 11-0250/-0710

D kstos, inlopp

Inlet connection

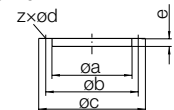
(flexible)



ZKE 11-0250/-0710

Motfläns, inlopp

Mating flange



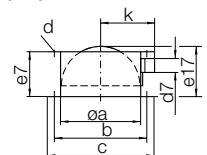
ZLK 21-0250/-0710

Motormanövrerat

spjäll

Motor drive

sh tter



ZSG 04-0250/-0710

Inloppsgaller

Mesh inlet g ard

